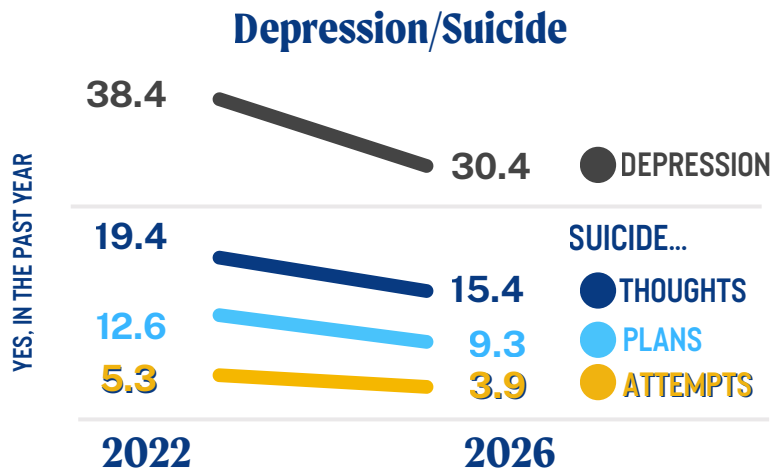


STUDENT SURVEY RESULTS

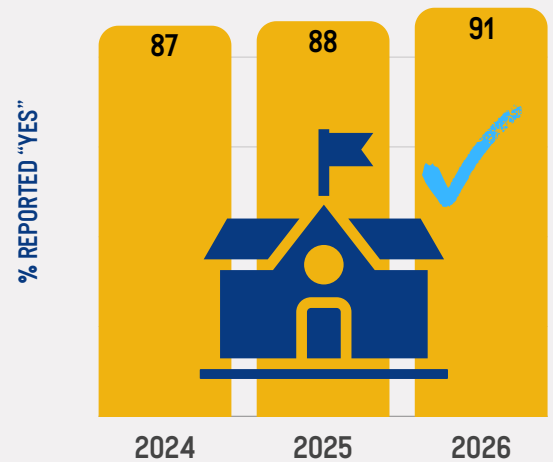


Mental Health: Positive Trends Continue

Reported feelings of depression, and suicidal thoughts, plans, and attempts continue to DECLINE since numbers peaked in 2022.



9 out of 10 Kids Feel Safe at School

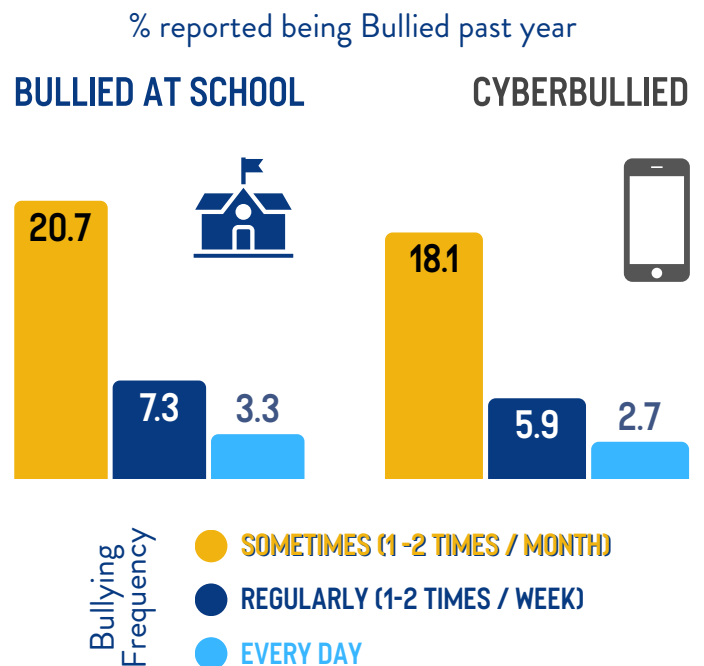
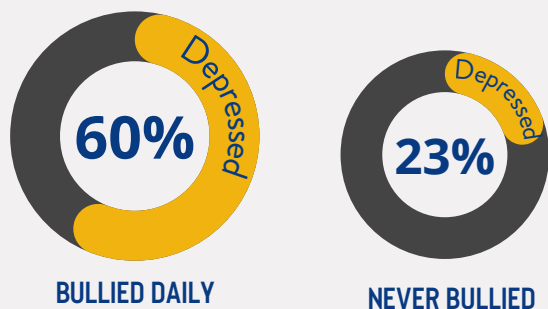


Bullying Reporting & Correlation:

2026 numbers below are consistent with or slightly below 2025 reporting.

Kids who reported being BULLIED daily reported feelings of DEPRESSION more than TWICE as much as kids who reported never being bullied.

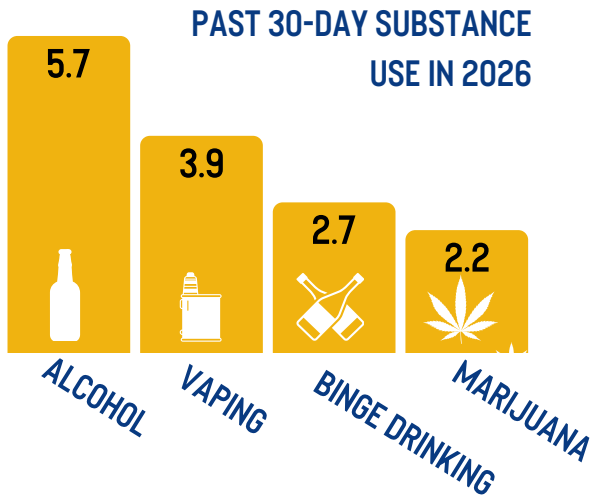
Depression-Bullying Correlation



Substance Use: Reporting Reaches Historic Lows



Reported use of ALL SUBSTANCES is at or near the lowest it has been in the 31-years of the KCTC Student Survey.

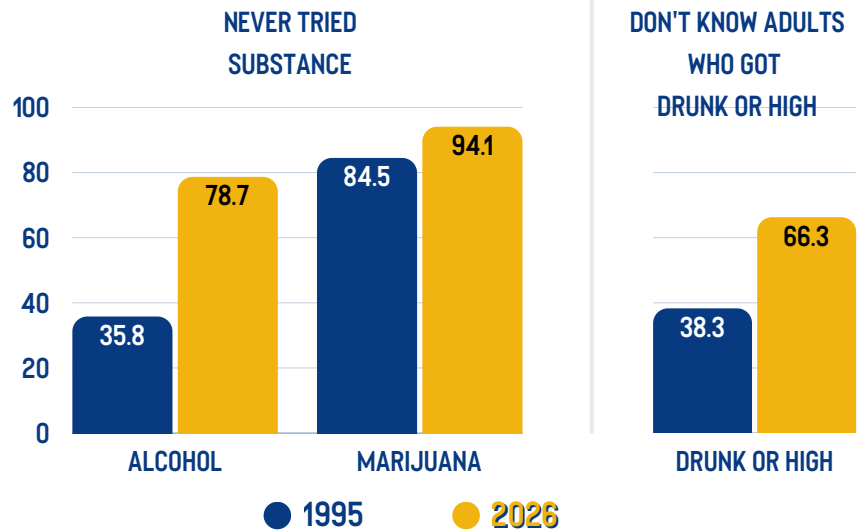


Alcohol & Marijuana

Positive Trends Continue

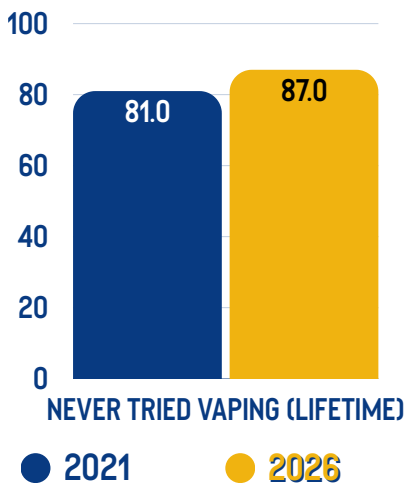
For both substances, more youth are reporting:

- ABSTAINING from use (lifetime)
- They don't know ADULTS who use (past year)

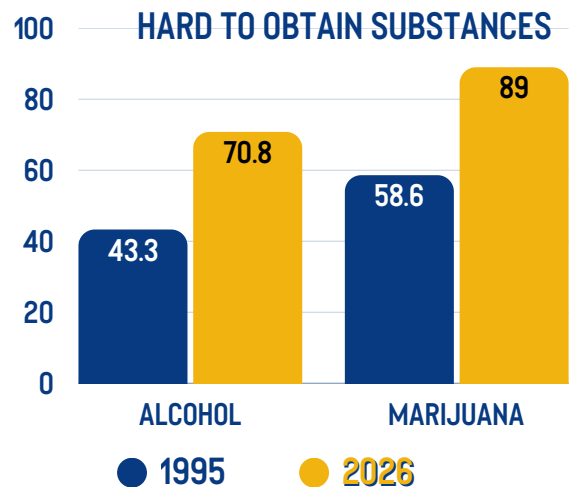


Vaping

The % of youth who NEVER TRIED VAPING (lifetime) has INCREASED since the question was added to the survey in 2021:

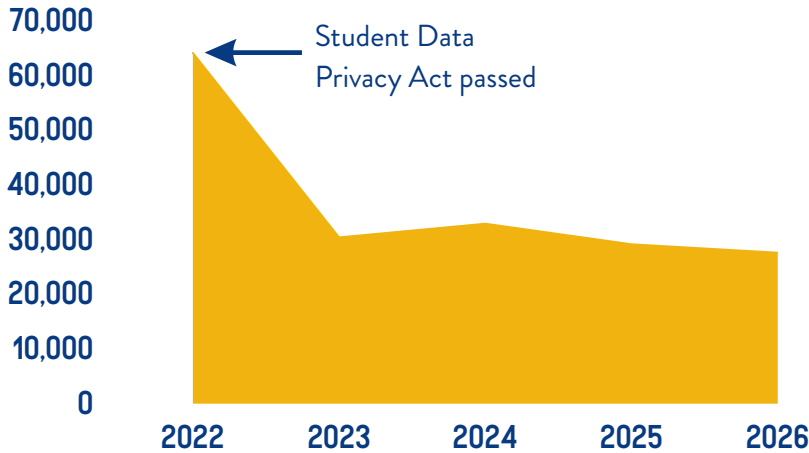


- It would be very hard or sort of HARD TO OBTAIN SUBSTANCES if they wanted to:



About the KCTC Student Survey

RECENT PARTICIPATION



*Eligible students are those enrolled in grades 6, 8, 10, and 12.

2026 SNAPSHOT

More than

27,600
surveys



153

public & private
school districts



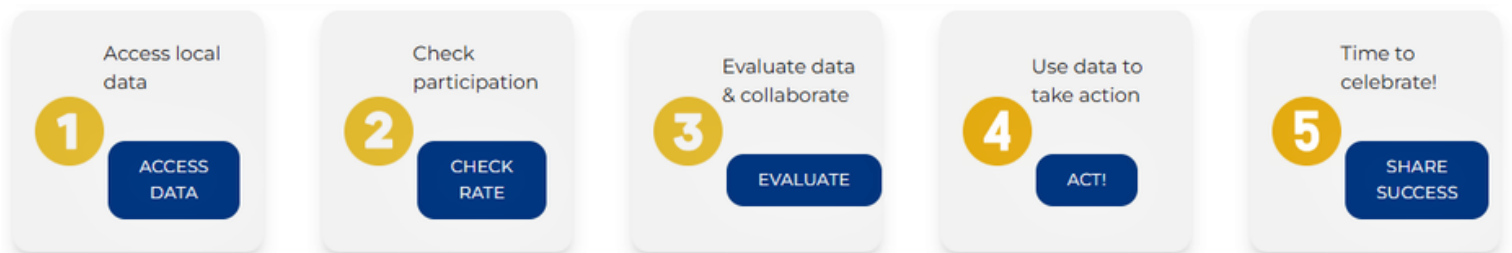
The survey took about

26 MINUTES
to complete



NEW! How to Use Survey Data

There are many opportunities to understand and ACT on data that youth report. Visit the [School Administrators](#) or [Communities](#) tabs on kctcdata.org for step-by-step instructions on how to create data-informed STRATEGIES that support YOUTH WELLBEING.



Since 1995, Greenbush has administered the KCTC Student Survey on behalf of the Kansas Department for Aging and Disability Services (KDADS), which makes the survey available to Kansas schools at no cost. Greenbush continues to help Kansans by providing local data and maintaining the highest ethical and legal standards to ensure student privacy, informed guardian and student consent, and accurate data reporting.

The survey is built on a prevention framework to support healthy youth development; inform local and state programs, policies, and practices; and provide local data to guide strategic planning to prevent risky youth behaviors.

