

The Kansas Communities That Care (KCTC) Student Survey is built on a prevention framework to:

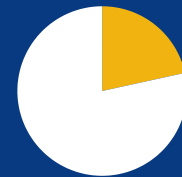
- Inform local and state programs, policies, and practices
- Support healthy youth development
- Provide local data to guide planning and strategies to prevent risky behaviors among Kansas youth



### 2024 PARTICIPATION



Nearly  
**33,000**  
student responses



**22%**  
of eligible\*  
students in Kansas  
participated

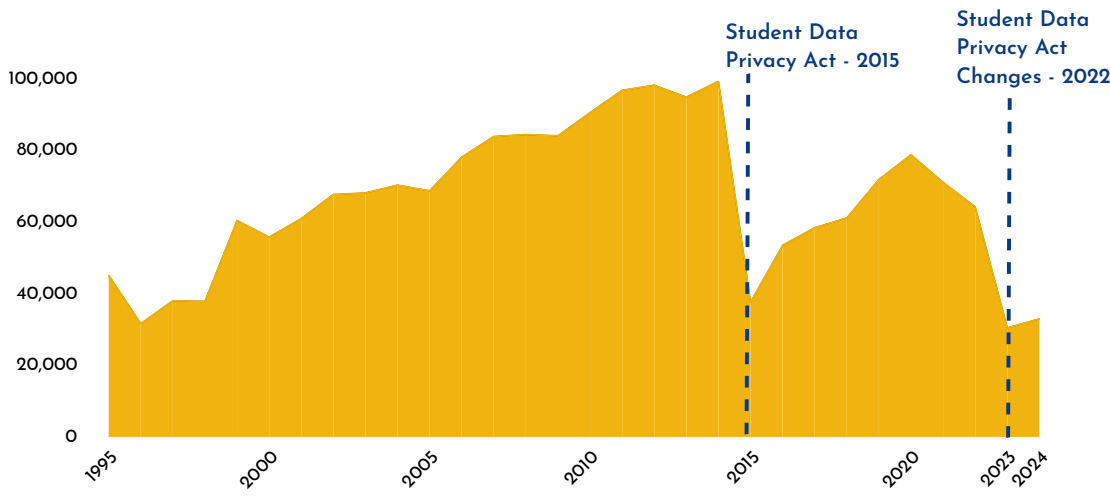


**179**  
public & private  
school districts  
participated

\*Eligible students are those enrolled in grades 6, 8, 10, and 12.

### KCTC STUDENT SURVEY PARTICIPATION

Number of student responses reported  
1995 - 2024



Survey participation increased from 2022-2023 to 2023-2024, both in total number of students and % of eligible students

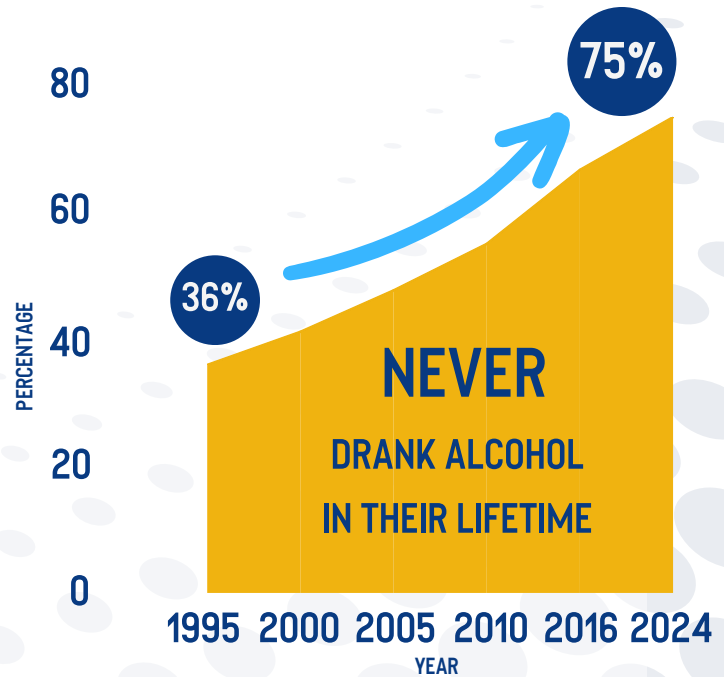
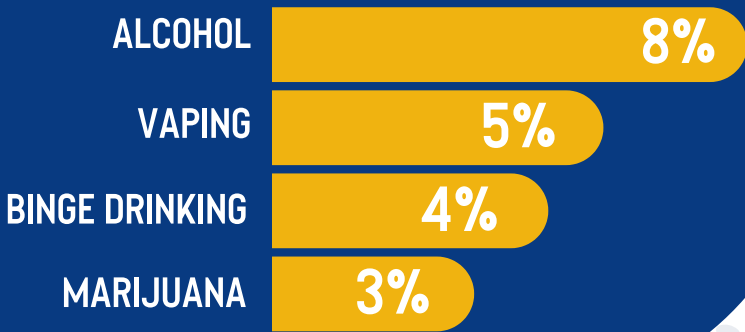
Since 1995, Greenbush has administered the KCTC Student Survey on behalf of the Kansas Department for Aging and Disability Services (KDADS), which makes the survey available to Kansas schools at no cost. The decision to administer the survey is left to the local school district. Greenbush continues to help Kansans by providing local data and maintaining the highest ethical and legal standards to ensure student privacy, informed guardian and student consent, and accurate data reporting.

Less than  
**1 in 13**  
 Kansas kids surveyed reported they drank alcohol in the past 30 days.

Over the past 29 years, a steadily increasing number of kids report they have NEVER drank alcohol.

**2024**

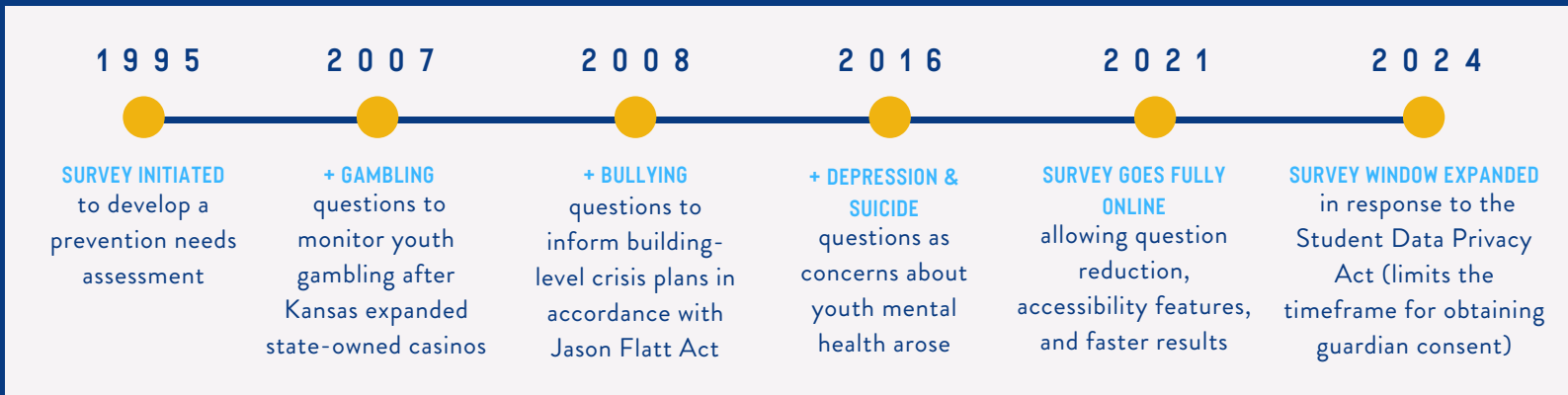
**SUBSTANCE USE IN PAST 30 DAYS**



DATA ILLUSTRATES RESPONSES FROM STUDENTS SURVEYED IN 2024 WHO ANSWERED EACH QUESTION.

**KCTC EVOLUTION**

Kansas was a leader in substance abuse prevention needs assessment and local data access



From the beginning, protocols have been in place to ensure guardians were informed about the survey's content and purpose, and how data would be utilized. In 2023, Greenbush expanded the survey window to open Oct. 2 in response to district feedback. The change was designed to make it easier to comply with 2022 Student Data Privacy Act requirements.

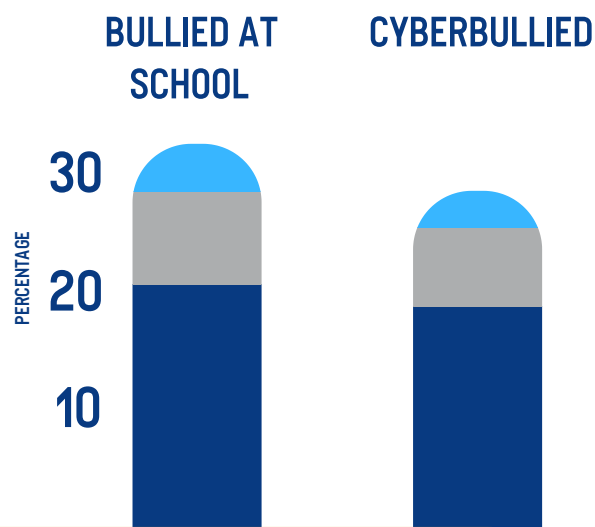
## SUICIDAL THOUGHTS, PLANS & ATTEMPTS IN THE PAST YEAR REPORTED BY STUDENTS IN 2024

- **16%** seriously thought about killing themselves
- **10%** made a plan to kill themselves
- **4%** tried to kill themselves

**1 in 3**



students surveyed reported FEELINGS OF DEPRESSION in the past year

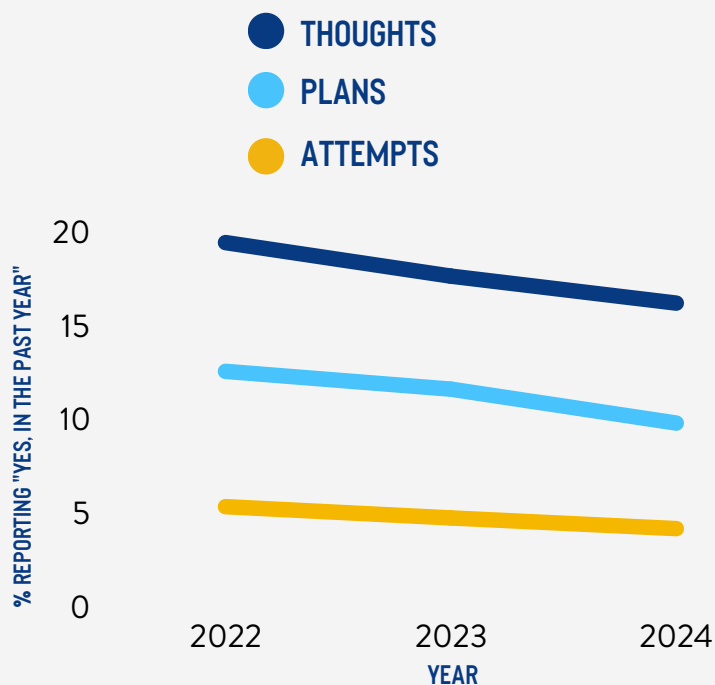


FREQUENCY OF BULLYING

- EVERY DAY
- REGULARLY (1 OR 2 TIMES A WEEK)
- SOMETIMES (1 OR 2 TIMES A MONTH)

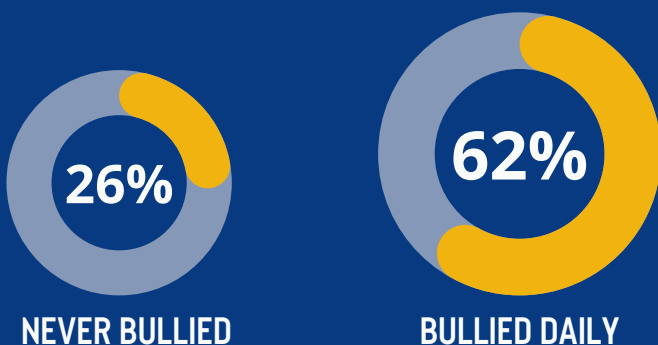
% students surveyed who reported being bullied in past 12 months

## SUICIDAL THOUGHTS, PLANS, AND ATTEMPTS REPORTED BY STUDENTS HAVE DECLINED SINCE 2022



DATA ILLUSTRATES RESPONSES FROM STUDENTS SURVEYED IN 2024 WHO ANSWERED EACH QUESTION.

## PERCENTAGE OF STUDENTS SURVEYED WHO REPORTED FEELINGS OF DEPRESSION BASED ON HOW FREQUENTLY THEY WERE BULLIED



Kids who reported being bullied daily reported feelings of depression more than twice as much as kids who reported they had never been bullied.

Being bullied once or twice a week also showed higher reported levels of depression.