

Since 1995, Greenbush has administered the Kansas Communities That Care (KCTC) Student Survey on behalf of the Kansas Department for Aging and Disability Services (KDADS). KDADS makes the survey available to Kansas schools at no cost, though the decision to administer the survey is left to the local school district. Our shared goal is to provide local data to guide planning and strategies to prevent risky behaviors among Kansas youth.

From the beginning, protocols have been in place to ensure parents/guardians were informed about the survey's content, purpose, and how data would be utilized. In 2022, amendments to the Student Data Privacy Act required changes in the administration protocols that impacted this year's survey participation.

Our team is dedicated to help Kansas schools navigate the changes. Greenbush continues our commitment to helping Kansans by providing local data and maintaining the highest ethical and legal standards to ensure student privacy, informed consent by parents/guardians and students, and accurate data reporting.

OVER
30,000
student responses



193 PUBLIC & PRIVATE
school districts participated



Results published by
early spring

20%

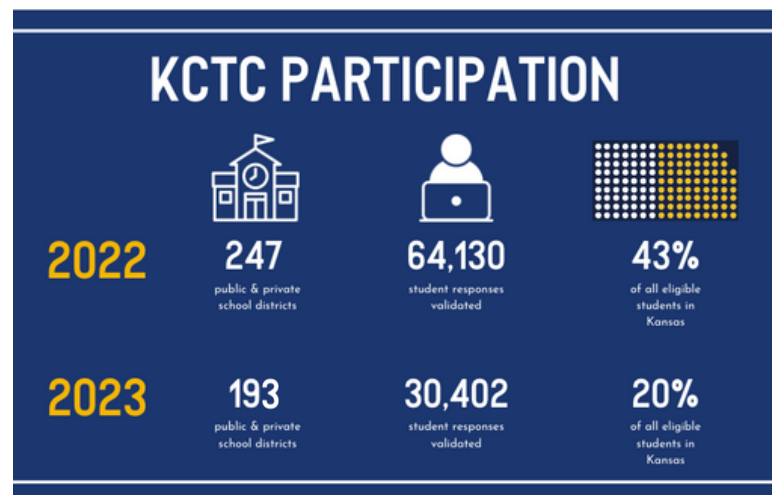
20% of eligible
6th, 8th, 10th, & 12th
graders participated



**THE SURVEY TAKES APPROXIMATELY
27 MINUTES TO COMPLETE**

On average, KCTC requires about two hours of students' time throughout their entire K-12 educational experience.

The total number of students who participated in the KCTC Student Survey during the 2022-2023 school year was the lowest in the 28 years the survey has been administered.



The Kansas Communities That Care (KCTC) Student Survey is built on a prevention framework to inform local and state programs, policies, and practices and support healthy youth development. Greenbush administers the KCTC Student Survey on behalf of the Kansas Department for Aging and Disability Services (KDADS).

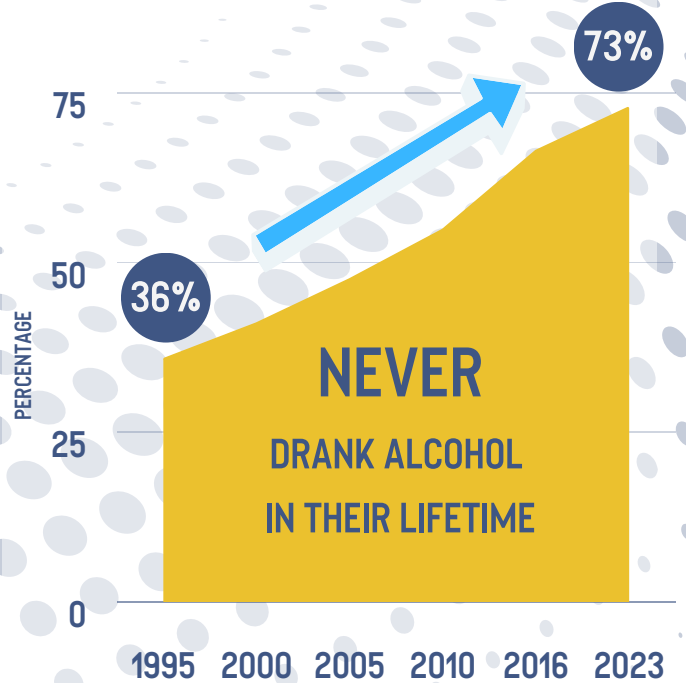
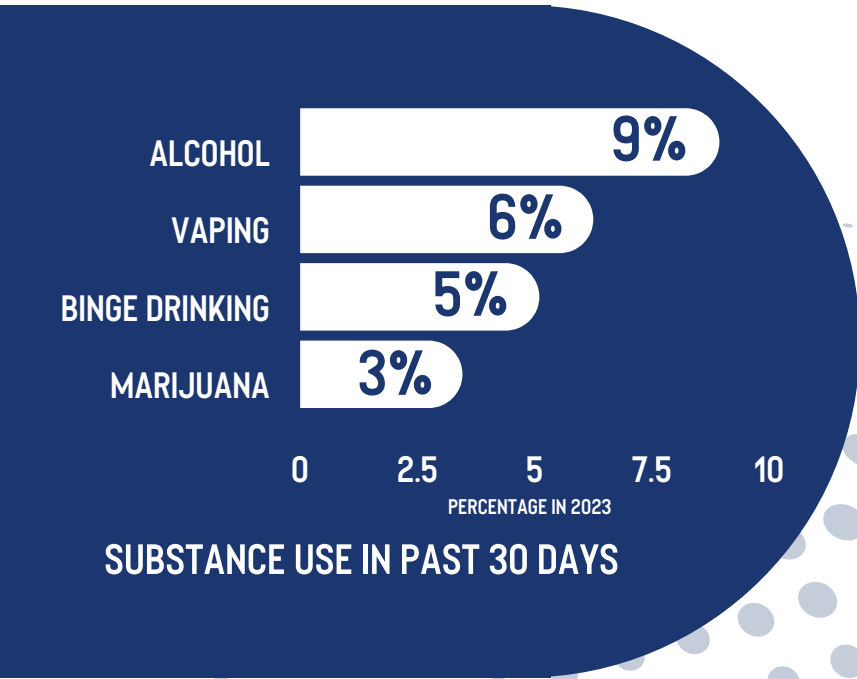
CONTACT US WITH QUESTIONS kctc@greenbush.org



2023

Less than
1 in 10
Kansas kids surveyed reported they drank alcohol in the past 30 days.

Over the past 28 years, a steadily increasing number of kids report that they have NEVER drank alcohol.



DATA ILLUSTRATES RESPONSES FROM STUDENTS SURVEYED IN 2023 WHO ANSWERED EACH QUESTION.

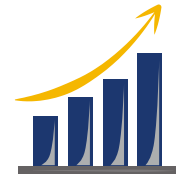
KCTC EVOLUTION

Kansas was a pioneer in substance abuse prevention needs assessment & local data access

1995	2007	2008	2016	2021	2023
COMMUNITIES THAT CARE SURVEY INITIATED Federally funded six-state project to develop a prevention needs assessment	+ GAMBLING When Kansas expanded state-owned casinos, questions were added to monitor youth gambling	+ BULLYING Used to inform building-level crisis plans in accordance with the Jason Flatt Act	+ DEPRESSION & SUICIDE As concerns about youth mental health arose, questions about depression and suicidal ideation were added	FULLY ONLINE ADMINISTRATION Reduced # of items Streamlined with skip logic Embedded instructions Accessibility features Reports available sooner	CHANGES IN INFORMED PARENT CONSENT PROTOCOLS Changes to the Student Data Privacy Act increased the steps and limited the timeframe for obtaining parent consent

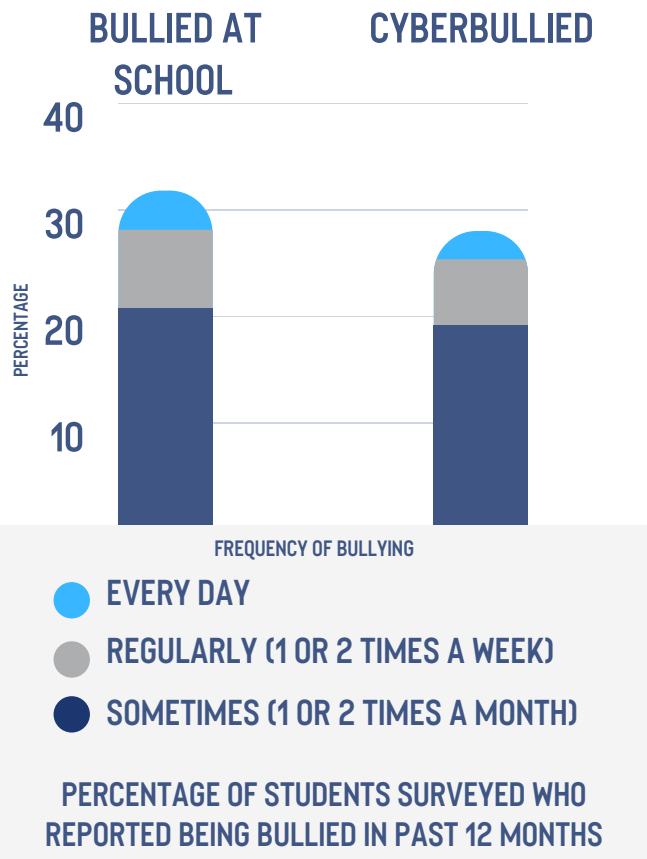
SUICIDAL THOUGHTS, PLANS & ATTEMPTS IN THE PAST YEAR REPORTED BY STUDENTS IN 2023

- 18% seriously thought about killing themselves
- 12% made a plan to kill themselves
- 5% tried to kill themselves

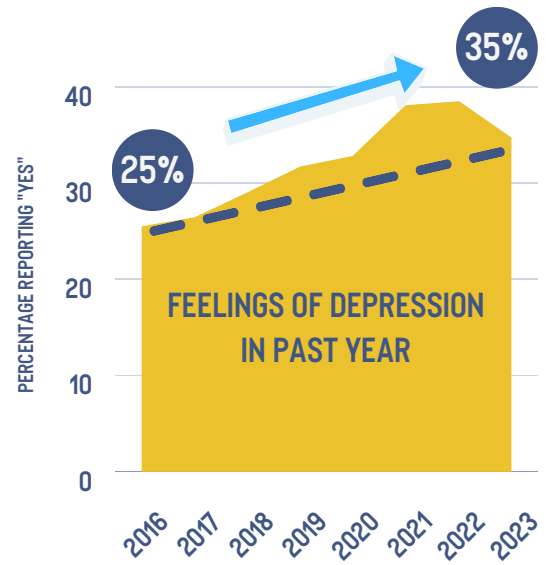


35%

of students surveyed reported feelings of depression in the past year.

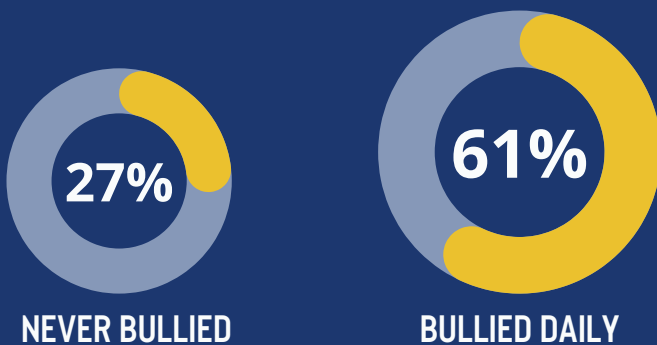


In 2023 there was a **DECREASE** in the percentage of students reporting feelings of depression **FOR THE FIRST TIME** since we began asking in 2016.



DATA ILLUSTRATES RESPONSES FROM STUDENTS SURVEYED IN 2023 WHO ANSWERED EACH QUESTION.

PERCENTAGE OF STUDENTS SURVEYED WHO REPORTED FEELINGS OF DEPRESSION BASED ON HOW FREQUENTLY THEY WERE BULLIED



Kids who reported being bullied daily reported feelings of depression twice as much as kids who reported they had never been bullied.

Being bullied once or twice a week also showed higher reported levels of depression.