
2022



Kansas Communities
That Care

STUDENT SURVEY



Kansas Communities That Care
Student Survey
SOGI Pilot Summary



ACKNOWLEDGMENTS



Kansas Communities That Care Student Survey SOGI Pilot Summary

THANK YOU TO THE CONTRIBUTORS OF THIS REPORT:

Lisa Chaney
Kelly Peak
Rachel Phillips
Farzana Sultana
Angie Williams

We would like to thank Dr. Jennifer Pearson and Dr. Lisa Pelkey for their expertise and guidance through the preparation of this report.



Citation:

Learning Tree Institute at Greenbush (LTI at GB). (June 2022). Kansas Communities That Care (KCTC) Student Survey SOGI Pilot Summary. *Learning Tree Institute*.

TABLE OF CONTENTS

01.	<u>Introduction</u> <ul style="list-style-type: none">• Background• Participation in Optional Modules• Limitations• Overview
06.	<u>Infographics</u>
13.	<u>Comparison Data</u> <ul style="list-style-type: none">• Suicidal Ideation & Behaviors• Depression• Bullying• Food Insecurity• Safety• Substance Use
24.	<u>What Can You Do To Help?</u>
26.	<u>Resources</u>
27.	<u>Appendices</u> <ul style="list-style-type: none">• Appendix A• Appendix B
29.	<u>References</u>



TRIGGER WARNING:

This report contains data about adolescent suicide, depression, bullying, and personal safety.

BACKGROUND

In January 2021, the Kansas Department of Aging and Disability Services (KDADS) approved the addition of two new optional modules to collect demographic data regarding sexual orientation and gender identity (SOGI) on the Kansas Communities That Care (KCTC) Student Survey. Changes were implemented for the 2021-2022 survey administration.

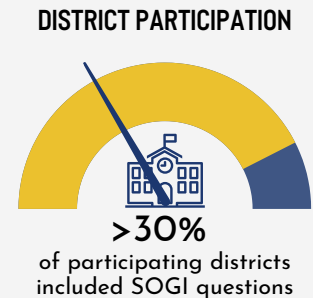
SOGI demographic questions presented in the pilot were based on best practices for asking adolescents these questions at the time. Learning Tree Institute at Greenbush (LTI) researchers reviewed the literature to identify validated SOGI demographic questions suitable for adolescents ages 10-19. However, few studies were found which demonstrated both reliability and validity and offered guidance regarding how to measure SOGI demographics among this exact age range.

A 2017 study published by Child Trends by Temkin et al, [Improving Measurement of Sexual Orientation and Gender Identity Among Middle and High School Students](#), was the only study in which middle school-aged students were included.

Demographic items presented on the 2021-2022 KCTC Student Survey are included on page 4. An additional reference document is included in [Appendix A](#) illustrating how student responses were aggregated and cites terminology using current definitions from the Centers for Disease Control.

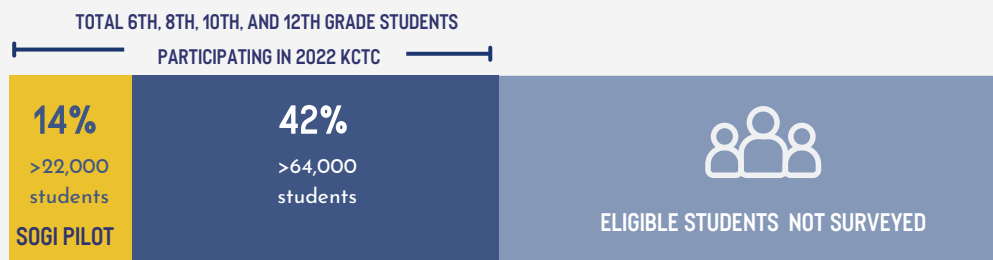
PARTICIPATION IN OPTIONAL SOGI MODULES

Approximately 22,000 students responded to demographic questions regarding their sexual orientation and gender identity. The complete methodology is described in the [KCTC 2022 Sexual Orientation and Gender Identity Pilot Methodology](#).



244 of 286 (85%) Kansas districts participated in the 2021-2022 KCTC Student Survey. Among participating districts, >70 of 244 (~30%) elected to include optional SOGI demographic questions.

STUDENT PARTICIPATION



All eligible 6th, 8th, 10th, & 12th grade students in Kansas

LIMITATIONS OF CURRENT DATA

Not all school districts administered the SOGI optional modules, and the convenience sampling method may limit the generalization of data to all students. Data in the 2022 SOGI Report represents the approximately 22,000 students who participated. A panel of experts was consulted regarding the presentation of the data collected. One limitation noted was the confounding of biological sex and gender in the wording of the biological sex question and in the gender identity response options.

Future survey administration will address these limitations and will broaden the inclusivity of additional gender identity and sexual orientation using write-in responses. A research team within LTI conducted a thorough literature review resulting in recommendations summarized in [KCTC Survey SOGI Item Selection](#).

Data collected in the KCTC 2022 SOGI Pilot shows patterns similar to published research. Responses from students included in the Kansas pilot who responded to the SOGI demographic questions are shown with the results of the Child Trends survey for which KCTC questions were modeled. Similar items asked on the Youth Risk Behavior Survey (YRBS), administered by the Centers for Disease Control (CDC) in 2019, are also shown for comparison. It is important to note that the YRBS presents SOGI demographics questions only to high school students.

Comparison of percentage of student-reported SOGI demographics from KCTC Pilot, Child Trends, and YRBS

Response Option		KCTC Student Survey SOGI Pilot 2022	Child Trends 2017	YRBS 2019 (*High School only)
Sexual Orientation	Straight	76.8	82.0	86.0
	Lesbian or Gay	3.0	2.0	2.7
	Bisexual	9.4	7.0	7.3
	Something else	4.4	2.0	--
	I'm not sure yet	6.4	7.0	4.0
Gender Identity	Cisgender	92.8	96.0	94.4
	Transgender	1.5	1.0	1.8
	Nonbinary: I do not identify as either male or female	2.9	1.0	--
	I'm not sure yet	2.8	1.0	1.6

OVERVIEW OF THIS REPORT

This summary report includes a descriptive illustration of how LGBT+ students responded to behavioral health and other questions compared to students who reported they are straight or cisgender, respectively. Data are presented only at the state level and will not be disaggregated at a local level in adherence to established standards to protect student privacy.



TRIGGER WARNING:

This report contains data about adolescent suicide, depression, bullying, and personal safety.

CONTACT US OR FOLLOW US FOR MORE INFORMATION



620.724.6281



www.kctcdata.org



kctc@greenbush.org



@KCTCStudentSurvey



SOGI Demographics

Sexual Orientation

Which of the following best describes your sexual orientation?

- o Straight, that is, not gay
- o Gay or lesbian
- o Bisexual
- o I'm not sure yet
- o Something else

Gender Identity

What gender were you assigned at birth, even if you are not that gender today (that is, what is the gender on your birth certificate)?

- o Male
- o Female

What is your current gender identity, even if it is different than the gender you were assigned at birth?

- o Male
- o Female
- o I do not identify as either male or female
- o I'm not sure yet

SURVEY ITEMS 2022

Temkin, D., Belford, J., McDannial, T., Stratford, B., and Parris, D. (2017). Improving measurement of sexual orientation and gender identity among middle and high school students. Child Trends. <https://drive.google.com/file/d/1DHTOHIBGinoUtXxM0vZSI1L5nfpblcV6/view>

SOGI Terminology

Sexual Orientation

Straight or Heterosexual

A man who is primarily attracted to women or a woman who is primarily attracted to men

Gay or Lesbian

A person who is attracted primarily to members of the same gender

Bisexual

A person who is attracted to both people of their own gender and other genders

Gender Identity

Cisgender

Individuals whose current gender identity is the same as the sex they were assigned at birth

Transgender

Individuals whose current gender identity differs from the sex they were assigned at birth

Nonbinary

Individuals who do not exclusively identify their gender as a male or female

TERMINOLOGY & DEFINITIONS

Terms listed are referenced from the Centers for Disease Control's (CDC) Division of Adolescent and School Health Health Considerations for LGBTQ Youth. Definitions are cited by CDC from APA's [Definitions Related to Sexual Orientation and Gender Diversity](#) and the World Health Organization's glossary of terms and tools.

<https://www.cdc.gov/healthyyouth/terminology/sexual-and-gender-identity-terms.htm>

INFOGRAPHICS

The infographics in the following section highlight the most prevalent, high-risk, behaviors reported by 6th, 8th, 10th, and 12th grade students surveyed in the pilot.

Infographics may be reproduced and shared by your organization in an effort to bring awareness to this subject.

Data reflect responses from students surveyed in the pilot who responded to each question and reported sexual orientation and gender identity.

The combination of demographic groups displayed is due to the low number of participants in each group disaggregated and to aid in visualizations.

The acronym LGBT+ is used to represent students reporting gay or lesbian, bisexual, or something else when asked about their sexual orientation and individuals whose current gender identity differs from the sex they were assigned at birth combined with those who reported nonbinary.



4x more
likely

**Transgender + Nonbinary
students in Kansas are
more likely to report experiencing
suicidal ideation & behaviors**

Seriously thought
about killing
themselves

Made a plan
about how to kill
themselves

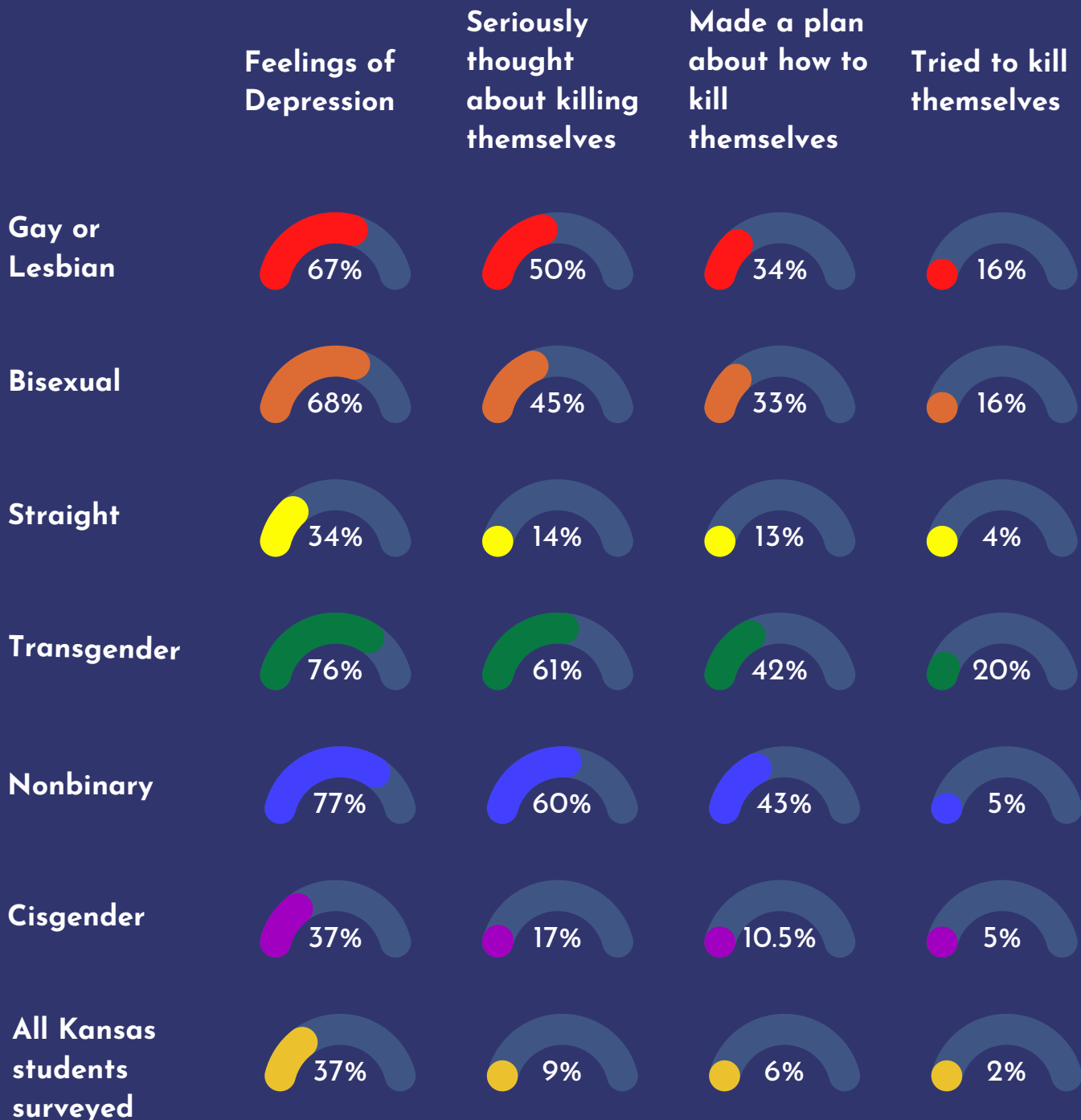
Tried to kill
themselves

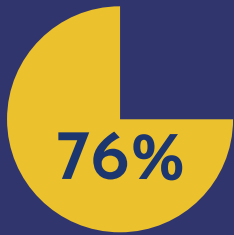


www.kctcdata.org

LGBT+ students reported higher levels of depression, suicidal ideation & behaviors

Percentage reporting "yes" during the past 12 months





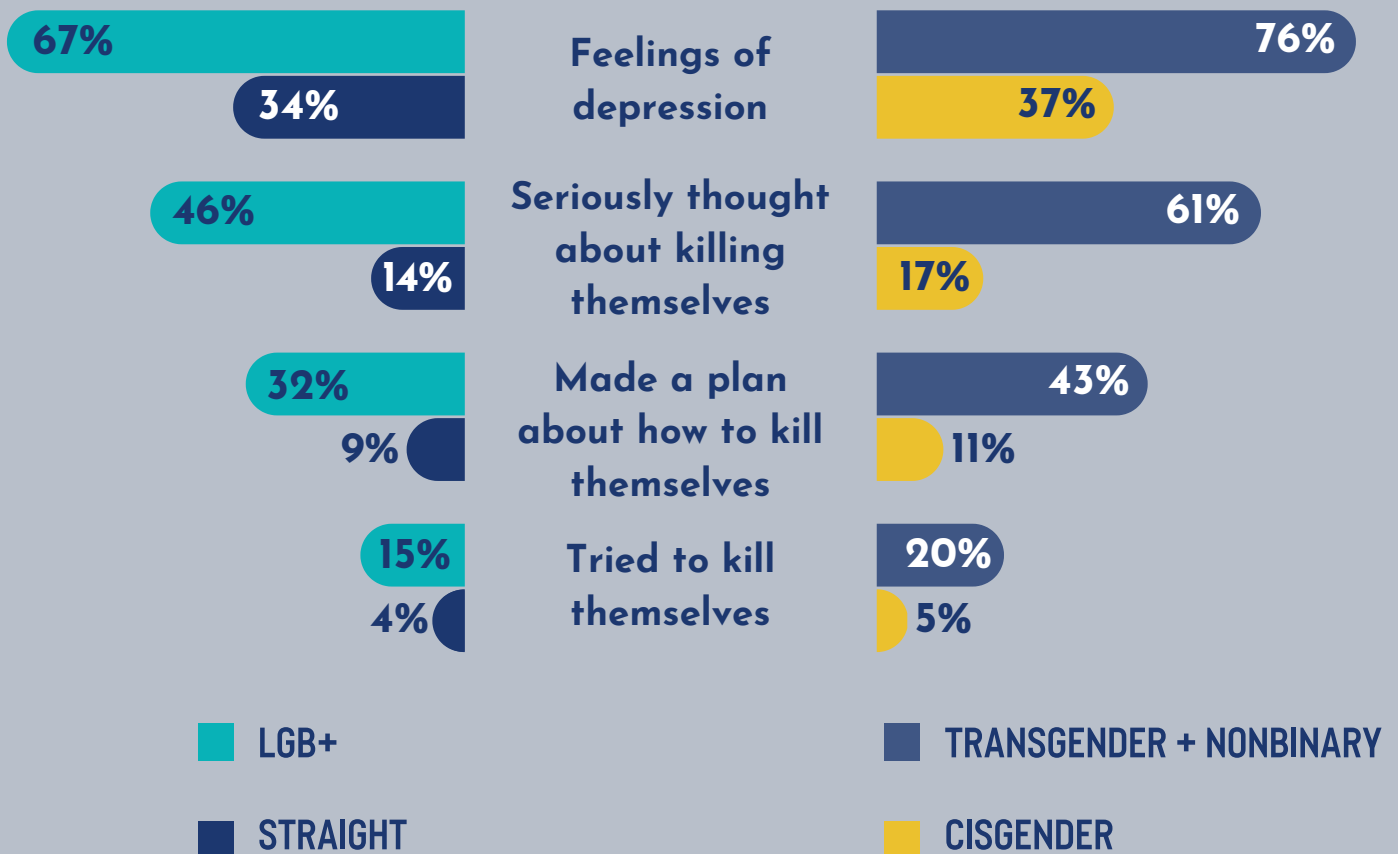
>3/4 of students who reported they are transgender or nonbinary reported they have **experienced feelings of depression** during the past year

HALF of students who reported they are lesbian or gay reported they have **seriously thought about killing themselves** during the past year



LGBT+ students reported higher levels of depression, suicidal ideation & behaviors

Percentage reporting "yes" during the past 12 months





LGBT+ students are **more likely** to report
feeling unsafe

33%

LGB+
compared to 14% of straight kids

MISSED SCHOOL BECAUSE THEY
FELT UNSAFE,
UNCOMFORTABLE OR NERVOUS

AT SCHOOL

43%

TRANSGENDER + NONBINARY
compared to 16% of cisgender kids

17%

LGB+
compared to 7% of straight kids

MISSED SCHOOL BECAUSE THEY
FELT UNSAFE,
UNCOMFORTABLE OR NERVOUS

ON THEIR WAY
TO/FROM SCHOOL

23%

TRANSGENDER + NONBINARY
compared to 8% of cisgender kids

27%

LGB+
compared to 12% of straight kids

DON'T FEEL SAFE
AT SCHOOL

37%

TRANSGENDER + NONBINARY
compared to 13% of cisgender kids



www.kctcdata.org



LGBT+ students experienced higher levels of

bullying



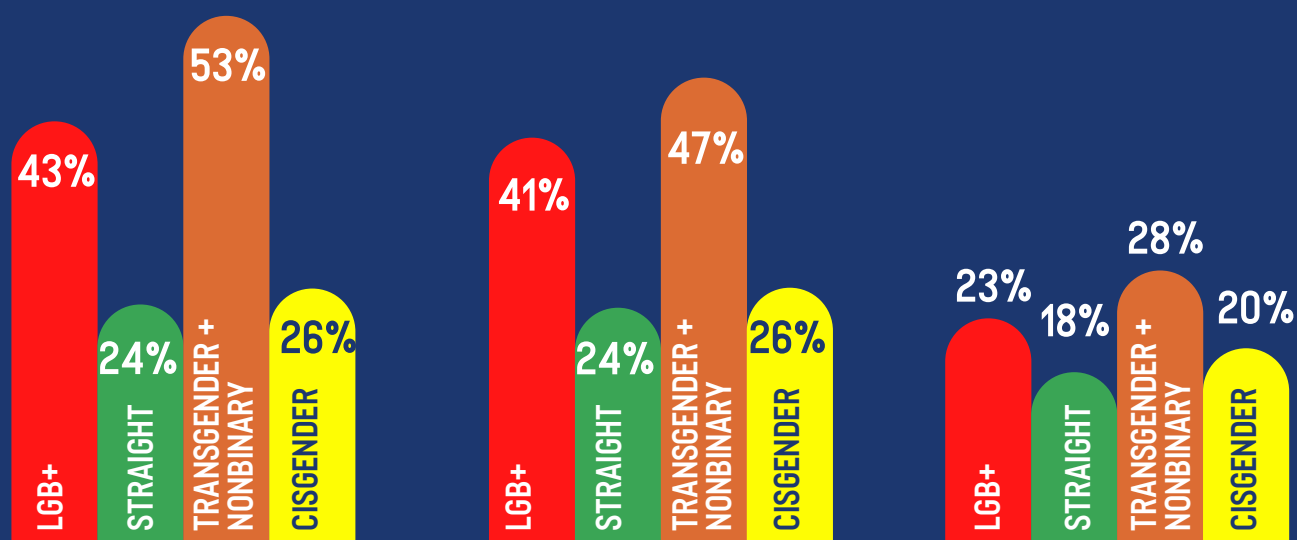
TRANSGENDER & NONBINARY

students reported being

bullied at school

DOUBLE

the percent reported by cisgender students



BULLIED AT SCHOOL

CYBERBULLIED

Texting, social media, & gaming

HAD PROPERTY
STOLEN OR DAMAGED
ON PURPOSE



www.kctcdata.org

LGBT+ students reported experiencing food insecurity

>> twice as much as straight or cisgender students

1 in 10

LGB+ & TRANSGENDER + NONBINARY STUDENTS REPORTED THEY

SKIPPED A MEAL

AT LEAST ONCE A MONTH

BECAUSE THEIR FAMILY DIDN'T HAVE ENOUGH MONEY TO BUY FOOD

>15%

LGB+ & TRANSGENDER + NONBINARY STUDENTS REPORTED THEY

WORRIED FOOD WOULD RUN OUT

AT LEAST ONCE A MONTH

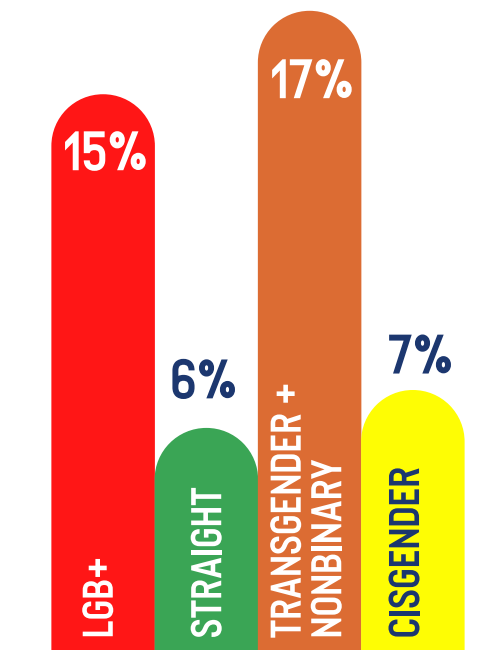
BECAUSE THEIR FAMILY DIDN'T HAVE ENOUGH MONEY TO BUY FOOD



www.kctcdata.org

AT LEAST ONCE A MONTH

LGBT+ students surveyed
reported they worried
that food at home would
run out before their
family got money
to buy more



Comparison Data

Data reflect responses from students surveyed in the pilot survey who responded to each question and reported sexual orientation and gender identity.

The aggregation of demographic groups displayed is due to the low number of participants in each group disaggregated and to aid in visualizations.

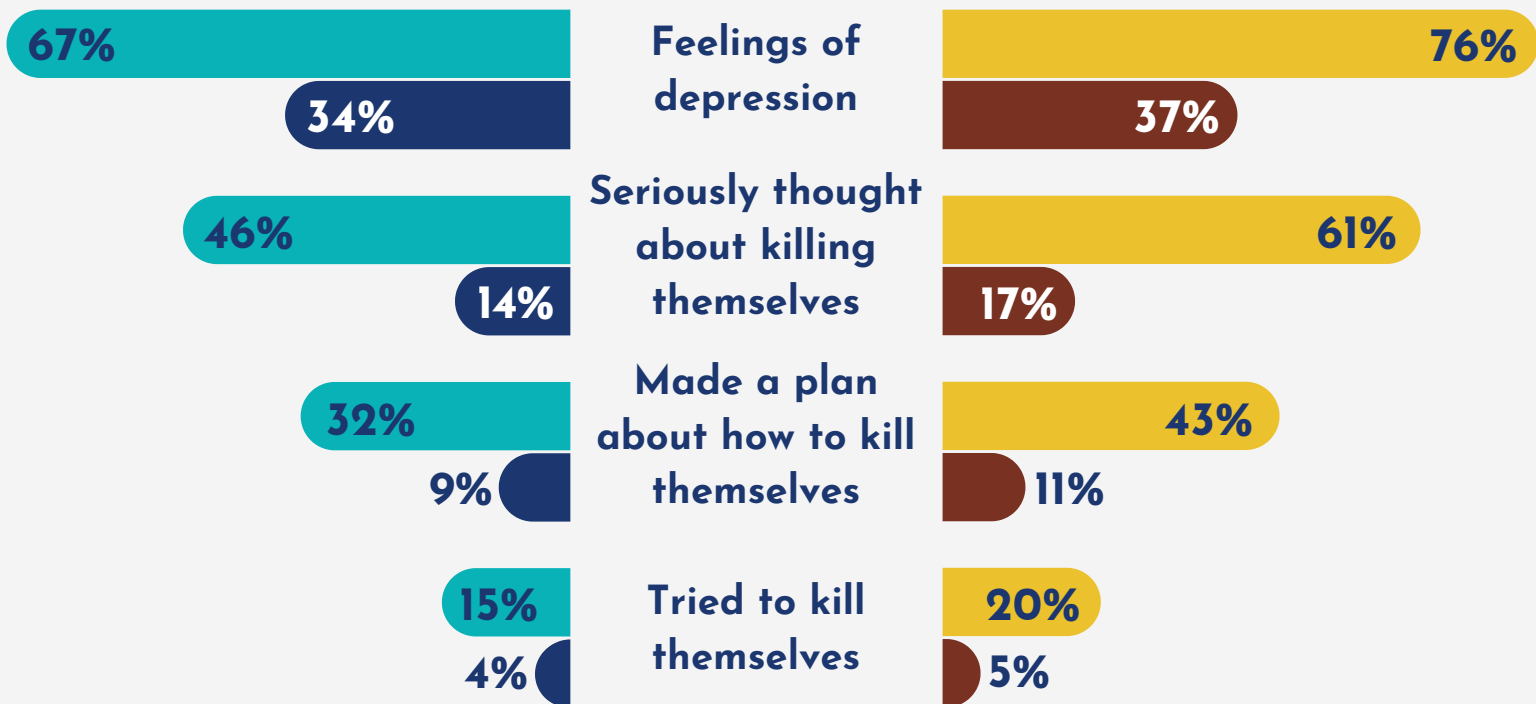
LGB+ includes student responding gay or lesbian, bisexual, or something else when asked about their sexual orientation.

Transgender+Nonbinary represents individuals whose current gender identity differs from the sex they were assigned at birth combined with those who reported Nonbinary.

SEXUAL ORIENTATION



GENDER IDENTITY



DEPRESSION, SUICIDAL IDEATION & BEHAVIORS

Percentage of students who reported feelings of depression or suicidal thoughts, plans, or attempts sorted by SOGI demographics

SEXUAL ORIENTATION

DEPRESSION, SUICIDAL IDEATION & BEHAVIORS	STRAIGHT	LGB+ LESBIAN OR GAY, BISEXUAL, OR SOMETHING ELSE	LESBIAN OR GAY	BISEXUAL	SOMETHING ELSE	I'M NOT SURE YET
FEELINGS OF DEPRESSION	33.9	67.0	66.7	67.6	66.9	47.4
SERIOUSLY THOUGHT ABOUT KILLING THEMSELVES	13.7	46.0	49.9	44.8	47.0	25.2
MADE A PLAN ABOUT HOW THEY WOULD KILL THEMSELVES	8.5	32.0	34.3	31.6	31.6	15.2
TRIED TO KILL THEMSELVES	3.6	15.2	15.8	15.7	13.6	6.3

GENDER IDENTITY

DEPRESSION, SUICIDAL IDEATION & BEHAVIORS	CISGENDER	TRANSGENDER+ NONBINARY	TRANSGENDER	NONBINARY	I'M NOT SURE YET
FEELINGS OF DEPRESSION	37.4	75.6	73.7	76.5	67.8
SERIOUSLY THOUGHT ABOUT KILLING THEMSELVES	16.8	60.6	60.9	60.4	46.8
MADE A PLAN ABOUT HOW THEY WOULD KILL THEMSELVES	10.5	42.7	42.3	42.9	32.2
TRIED TO KILL THEMSELVES	4.8	20.0	19.8	20.1	11.9

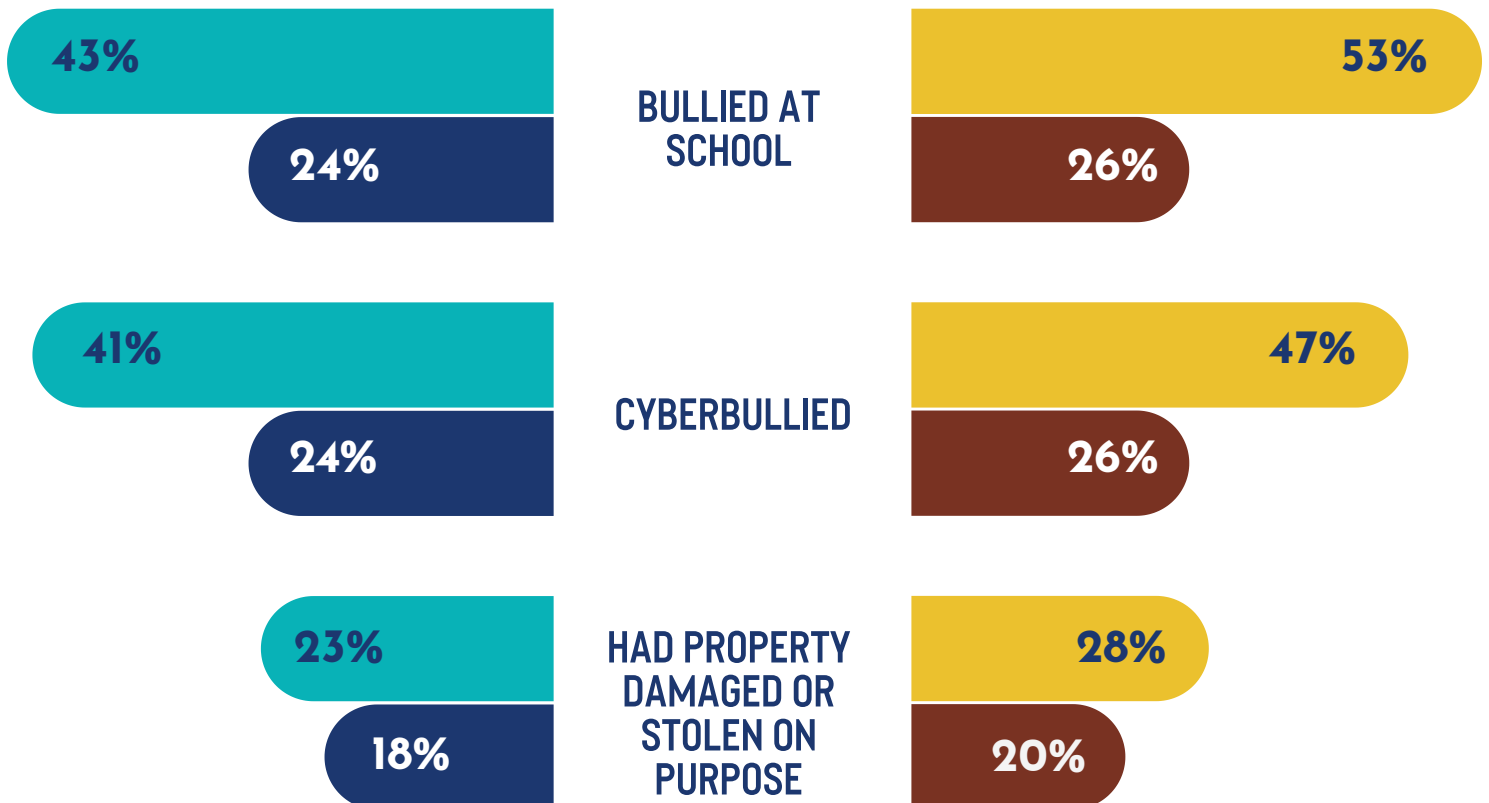
BULLYING

DURING THE PAST 12 MONTHS

SEXUAL ORIENTATION



GENDER IDENTITY



BULLYING

Percentage of students who reported experiencing bullying at least once in the past 12 months sorted by SOGI demographics

SEXUAL ORIENTATION

EXPERIENCED BULLYING	STRAIGHT	LGB+ LESBIAN OR GAY, BISEXUAL, OR SOMETHING ELSE	LESBIAN OR GAY	BISEXUAL	SOMETHING ELSE	I'M NOT SURE YET
BULLIED AT SCHOOL	24.4	42.8	47.0	41.5	42.6	32.6
CYBERBULLIED THROUGH TEXT, SOCIAL MEDIA, OR GAMING	24.4	40.8	43.6	41.1	38.1	28.4
HAD PROPERTY STOLEN OR DAMAGED ON PURPOSE SUCH AS YOUR CAR, CLOTHING, OR BOOKS	17.6	23.0	25.0	22.1	23.7	18.2

GENDER IDENTITY

EXPERIENCED BULLYING	CISGENDER	TRANSGENDER + NONBINARY	TRANSGENDER	NONBINARY	I'M NOT SURE YET
BULLIED AT SCHOOL	26.0	53.4	51.3	54.5	41.2
CYBERBULLIED (THROUGH TEXTING, SOCIAL MEDIA, OR GAMING)	26.0	46.5	44.9	47.3	36.1
HAD PROPERTY STOLEN OR DAMAGED ON PURPOSE (SUCH AS YOUR CAR, CLOTHING, OR BOOKS)	20.0	27.8	25.2	29.1	25.1

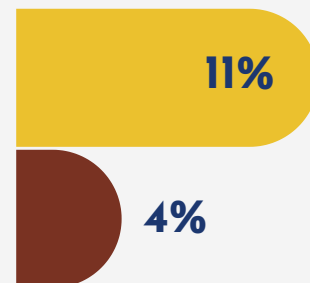
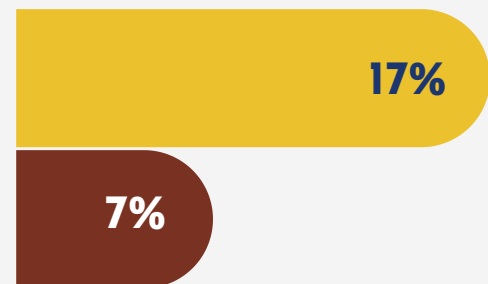
FOOD INSECURITY

AT LEAST ONCE DURING THE PAST 12 MONTHS

SEXUAL ORIENTATION



GENDER IDENTITY



FOOD INSECURITY

Percentage of students who reported food insecurity
sorted by SOGI demographics

SEXUAL ORIENTATION

TYPE OF FOOD INSECURITY	STRAIGHT	LGB+ LESBIAN OR GAY, BISEXUAL, OR SOMETHING ELSE	LESBIAN OR GAY	BISEXUAL	SOMETHING ELSE	I'M NOT SURE YET
WORRIED AT LEAST ONCE A MONTH THAT FOOD AT HOME WOULD RUN OUT BEFORE FAMILY GOT MONEY TO BUY MORE	6.1	14.9	15.1	14.3	18.4	10.6
SKIPPED A MEAL AT LEAST ONCE A MONTH BECAUSE FAMILY DIDN'T HAVE ENOUGH MONEY TO BUY FOOD	3.3	9.5	11.8	8.6	10.0	4.2

GENDER IDENTITY

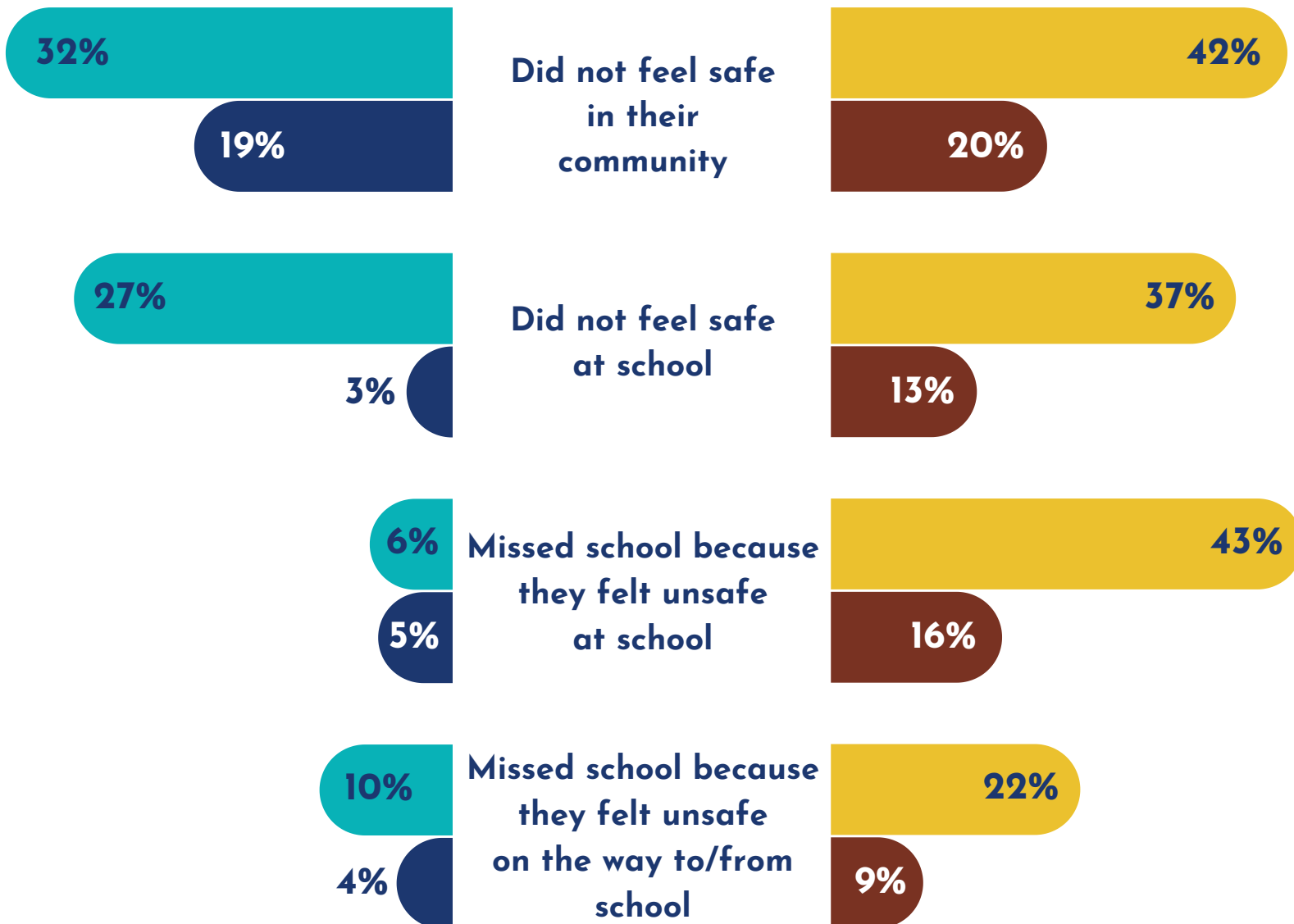
TYPE OF FOOD INSECURITY	CISGENDER	TRANSGENDER+ NONBINARY	TRANSGENDER	NONBINARY	I'M NOT SURE YET
WORRIED AT LEAST ONCE A MONTH THAT FOOD AT HOME WOULD RUN OUT BEFORE FAMILY GOT MONEY TO BUY MORE	7.1	17.1	17.0	17.1	16.1
SKIPPED A MEAL AT LEAST ONCE A MONTH BECAUSE FAMILY DIDN'T HAVE ENOUGH MONEY TO BUY FOOD	3.8	10.9	11.8	10.4	8.0

SAFETY

SEXUAL ORIENTATION



GENDER IDENTITY



SAFETY

Percentage of students who reported they do not feel safe
sorted by SOGI demographic groups

SEXUAL ORIENTATION

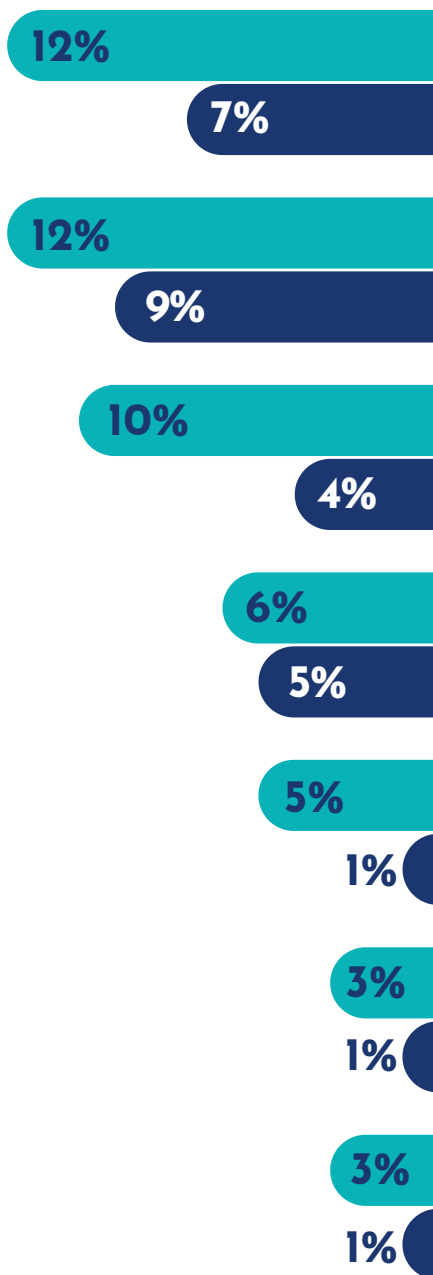
FEELING SAFE	STRAIGHT	LGB+ LESBIAN OR GAY, BISEXUAL, OR SOMETHING ELSE	LESBIAN OR GAY	BISEXUAL	SOMETHING ELSE	I'M NOT SURE YET
DID NOT FEEL SAFE IN THEIR COMMUNITY	18.5	32.0	33.0	36.0	22.7	36.2
DID NOT FEEL SAFE AT SCHOOL	12.3	27.1	29.4	25.3	29.6	18.4
MISSED SCHOOL BECAUSE THEY FELT UNSAFE, UNCOMFORTABLE, OR NERVOUS AT SCHOOL	5.3	5.9	6.6	6.5	4.1	2.3
MISSED SCHOOL BECAUSE THEY FELT UNSAFE, UNCOMFORTABLE OR NERVOUS ON THEIR WAY TO/FROM SCHOOL	4.0	9.5	8.5	10.9	7.2	3.8

GENDER IDENTITY

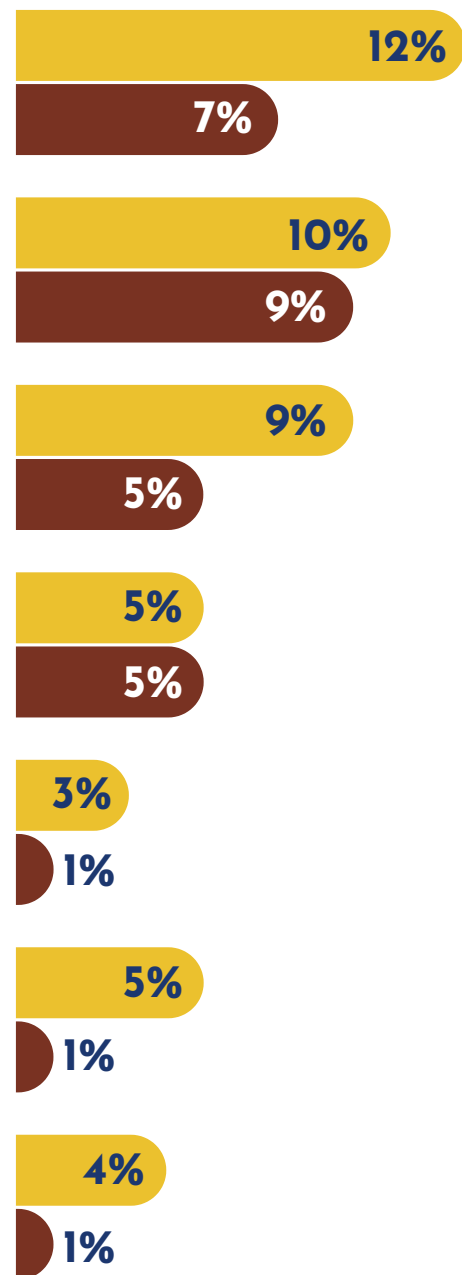
FEELING SAFE	CISGENDER	TRANSGENDER+ NONBINARY	TRANSGENDER	NONBINARY	I'M NOT SURE YET
DID NOT FEEL SAFE IN THEIR COMMUNITY	19.7	41.6	43.3	40.7	35.1
DID NOT FEEL SAFE AT SCHOOL	13.3	36.9	35.1	37.8	30.6
MISSED SCHOOL BECAUSE THEY FELT UNSAFE, UNCOMFORTABLE, OR NERVOUS AT SCHOOL	15.6	43.0	44.6	42.2	33.9
MISSED SCHOOL BECAUSE THEY FELT UNSAFE, UNCOMFORTABLE OR NERVOUS ON THEIR WAY TO/FROM SCHOOL	8.4	22.7	23.6	22.2	33.9

SUBSTANCE USE DURING THE PAST 30 DAYS

SEXUAL ORIENTATION



GENDER IDENTITY



SUBSTANCE USE

Percentage of students who reported using substances at least once during the past 30 days sorted by SOGI demographic groups

SEXUAL ORIENTATION

SUBSTANCE	STRAIGHT	LGB+ LESBIAN OR GAY, BISEXUAL, OR SOMETHING ELSE	LESBIAN OR GAY	BISEXUAL	SOMETHING ELSE	I'M NOT SURE YET
VAPING	6.9	12.4	12.1	14.0	9.2	4.6
ALCOHOL	9.3	11.8	13.0	12.4	9.7	6.2
MARIJUANA	4.0	9.5	8.5	10.9	7.2	3.8
ALCOHOL - BINGE DRINKING (FIVE OR MORE DRINKS ON THE SAME OCCASION)	5.3	5.9	6.6	6.5	4.1	2.3
PRESCRIPTION DRUG MISUSE (TRANQUILIZERS, PAIN RELIEVERS & STIMULANTS NOT PRESCRIBED FOR YOU BY A DOCTOR)	1.0	2.3	2.7	2.4	1.8	1.5
INHALANTS	1.3	3.1	3.1	2.9	3.5	2.0
CIGARETTES	0.8	2.9	2.3	3.3	2.5	0.5

GENDER IDENTITY

SUBSTANCE	CISGENDER	TRANSGENDER+ NONBINARY	TRANSGENDER	NONBINARY	I'M NOT SURE YET
VAPING	7.0	11.8	9.6	12.9	6.7
ALCOHOL	8.9	10.0	10.1	10.0	6.1
MARIJUANA	4.5	9.2	8.3	9.6	4.8
ALCOHOL - BINGE DRINKING (FIVE OR MORE DRINKS ON THE SAME OCCASION)	4.8	4.8	6.1	4.1	2.3
PRESCRIPTION DRUG MISUSE (TRANQUILIZERS, PAIN RELIEVERS & STIMULANTS NOT PRESCRIBED FOR YOU BY A DOCTOR)	1.0	3.1	2.9	3.2	1.9
INHALANTS	1.3	5.0	4.1	5.4	3.1
CIGARETTES	0.9	4.1	5.2	3.5	1.9

WHAT CAN YOU DO?

"This is progress. It's not about perfection and just having these questions on here is a courageous conversation... So, I'm very grateful for that work. It's messy. This work is always going to be messy, but in two years, five years, 10 years, you're going to have laid the foundation and other states will be looking at your data as the example for how to do this... So, thank you for that."

- Stakeholder comment in reference to SOGI questions on KCTC Student Survey during expert panel roundtable discussion

WHAT CAN YOU DO TO HELP?

Where do you go from here? Student data are not just about looking back, but also looking forward.

If you are interested in additional information regarding available resources, tools, and best practices for addressing ways to cultivate a safe and supportive environment for all students, regardless of sexual orientation, gender identity or expression (SOGI), or are interested in receiving training or technical assistance, please consult the following resources.



For training opportunities for your school to enhance culturally responsive care for LGBTQ+ students, contact Stacie Clarkson with Greenbush Specialized Learning Services (SLS) at 620-724-6281 or visit greenbush.org.



If you are a parent looking for support, a young person looking to connect, a professional interested in learning best practices, a faith leader seeking resources, or anyone who wants the most up-to-date and accurate information about gender and youth, Gender Spectrum can help. Visit www.genderspectrum.org.



Visit www.glsen.org for resources and professional learning opportunities around the topic of safe and supportive schools for all youth, regardless of sexual orientation and gender identity and expression. Locate everything from lesson plans to leadership opportunities with your GLSEN chapter.



Mental Health and Advocacy

Looking for a [Mental Health and Advocacy Resource for LGBTQ Youth](#)? Check out this 3 minute read from GLSEN at <https://www.glsen.org/activity/mental-health-advocacy>.

Are you looking for additional information about providing safe and supportive environments for all students inclusive of LGBTQ+ experiences? Check out the resources below recommended by the National Association of School Psychologists and GLSEN Kansas.



Click to view these recommended resources for educators:

- [Respect for All Policy Resource](#)
- [Safe Space Kit](#)



Visit the National SOGIE center at www.sogiecenter.org to locate resources on providing culturally responsive care and learn more about promoting the wellbeing of LGBTQ+ youth.



Allies for All. For research based strategies supporting LGBTQ+ youth, consider literature from the [National Association of School Psychologists and their "Allies for All" resources at nasponline.org](#).



APPENDIX A

APPENDIX A : 2022 KCTC STUDENT SURVEY QUESTIONS, RESPONSE OPTIONS, AND TERMINOLOGY DEFINITIONS

KCTC Student Survey questions & answer options			How were survey responses combined for reporting?	Terminology & definitions
SEXUAL ORIENTATION	<p>Which of the following best describes your sexual orientation?</p> <ul style="list-style-type: none"> o Straight, that is, not gay o Gay or lesbian o Bisexual o I'm not sure yet o Something else 	<p>Heterosexual or Straight Straight, that is, not gay</p> <p>Same Sex Gay or Lesbian</p> <p>Bisexual Bisexual</p> <p>I'm not sure yet I'm not sure yet</p> <p>Something else Something else</p>	<p>Heterosexual or Straight A man who is primarily attracted to women or a woman who is primarily attracted to men.</p> <p>Gay or Lesbian A person who is attracted primarily to members of the same gender.</p> <p>Bisexual A person who is attracted to both people of their own gender and other genders.</p> <p>I'm not sure yet Something else</p>	
	<p>What gender were you assigned at birth, even if you are not that gender today (that is, what is the gender on your birth certificate)?</p> <ul style="list-style-type: none"> o Male o Female <p>What is your current gender identity, even if it is different than the gender you were assigned at birth?</p> <ul style="list-style-type: none"> o Male o Female o I do not identify as either male or female o I'm not sure yet 	<p>Transgender male birth sex = female, gender identity = male</p> <p>Transgender female birth sex = male, gender identity = female</p> <p>Cisgender male birth sex = male, gender identity = male</p> <p>Cisgender female birth sex = female, gender identity = female</p> <p>Nonbinary I do not identify as either male or female</p> <p>I'm not sure yet I'm not sure yet</p>	<p>Cisgender Individuals whose current gender identity is the same as the sex they were assigned at birth</p> <p>Transgender Individuals whose current gender identity differs from the sex they were assigned at birth. (CDC)</p> <p>Nonbinary Individuals who do not exclusively identify their gender as a male or female. (CDC)</p> <p>I'm not sure yet</p>	
GENDER IDENTITY				

Centers for Disease Control - Adolescent and School Health Glossary of Terminology
<https://www.cdc.gov/healthyyouth/terminology/sexual-and-gender-identity-term.htm#text=Cisgender%3A%20Individuals%20whose%20current%20gender%20identity%20was%20assigned%20at%20birth>

2023 SOGI Demographic Survey Items

APPENDIX B

Recommendations for modifying SOGI demographic questions on the 2023 student survey are documented by the LTI research team in *Kansas Communities That Care (KCTC) Student Survey (SOGI) Item Selection*.

Sexual Orientation

Which of the following best describes your sexual orientation?

- Straight
- Gay or lesbian
- Bisexual
- Questioning or not sure
- Other (Open text box for optional write-in)
- I don't understand what the question is asking

Gender Identity

What sex were you assigned at birth?

- Male
- Female

What is your current gender identity?

- Boy or man
- Girl or woman
- Nonbinary
- Questioning or not sure
- Other (Open text box for optional write-in)

Chaney, L., Pelkey, L.M., Sultana, F., & Williams, A. (April 2022). Kansas Communities That Care (KCTC) Student Survey: Sexual Orientation and Gender Identity (SOGI) Item Selection. *Learning Tree Institute*.

REFERENCES

References

Centers for Disease Control of Adolescent and School Health. (2019). Terminology. [Terminology | Adolescent and School Health | CDC](#). Accessed 25 March 2022.

Chaney, L., Pelkey, L.M., Sultana, F., & Williams, A. (April 2022). Kansas Communities That Care (KCTC) Student Survey: Sexual Orientation and Gender Identity (SOGI) Item Selection. *Learning Tree Institute*.

Greenbush. (2022). *Kansas Communities That Care (KCTC) Student Survey* [Data set]. Kansas Department for Aging and Disability Services. <http://www.kctcdata.org>

LTI at Greenbush. (2022). KCTC 2022 Sexual Orientation and Gender Identity Pilot Methodology. <https://kctcdata.org/file/sogi-methodology-kctc-student-survey-2022>.

Temkin, D., Belford, J., McDaniel, T., Stratford, B., & Parris, D. (2017). Improving measurement of sexual orientation and gender identity among middle and high school students. *Child Trends*, 22, 1-64.