

2023

Kansas Communities That Care Student Survey

SOGI DEMOGRAPHICS SUMMARY



**Kansas Communities
That Care**

STUDENT SURVEY



Kansas Communities That Care Student Survey

2023

SOGI Demographics Summary

THANK YOU TO THE CONTRIBUTORS OF THIS REPORT:

Lisa Chaney
Kelly Peak
Rachel Phillips
Farzana Sultana

We would like to thank Dr. Jennifer Pearson and Dr. Lisa Pelkey for their expertise and guidance through the preparation of this report.



Citation:

Learning Tree Institute at Greenbush (LTI at GB). (December 2023). Kansas Communities That Care (KCTC) Student Survey SOGI Summary. *Learning Tree Institute*.

TABLE OF CONTENTS

01. [Introduction](#)

- Background
- Participation in Optional SOGI Modules
- Limitations of Current Data
- Overview
- Survey Items 2023
- SOGI Terminology

05. [Infographics](#)

15. [Comparison Data](#)

- Suicidal Ideation & Behaviors
- Depression
- Bullying
- Food Insecurity
- Safety
- Substance Use

25. [Where can I find help?](#)

26. [What else can you do to help?](#)

27. [Resources](#)

28. [References](#)



TRIGGER WARNING:

This report contains data about adolescent suicide, depression, bullying, and personal safety.

BACKGROUND

In January 2021, the Kansas Department for Aging and Disability Services (KDADS) approved the addition of two optional modules to collect demographic data regarding sexual orientation and gender identity (SOGI) on the Kansas Communities That Care (KCTC) Student Survey. Changes were implemented for the 2021-2022 survey administration.

SOGI demographic questions presented in the pilot were based on best practices for asking adolescents these questions at the time. The Learning Tree Institute (LTI) at Greenbush researchers reviewed the literature to identify validated SOGI demographic questions suitable for adolescents ages 10-18. However, few studies were found which demonstrated both reliability and validity and offered guidance regarding how to measure SOGI demographics among this exact age range.

Currently, LTI follows guidance from experts in the field of SOGI as outlined in the 2022 Kansas Communities That Care (KCTC) Student Survey: Sexual Orientation and Gender Identity (SOGI) Item Selection report, the 2022 Kansas Communities That Care (KCTC) Student Survey: Sexual Orientation and Gender Identity (SOGI) Expert Roundtable report, and the 2022 Kansas Communities That Care (KCTC): Language of the 21st Century student focus group project.

The research team at LTI analyzes and evaluates the use of appropriate SOGI terminology annually. Question language and response options for SOGI are revised as developments are made and verified through literature review.

Demographic items presented on the 2022-2023 KCTC Student Survey are included on page three. An additional reference document is included on page four clarifying SOGI terminology and current definitions from the Centers for Disease Control.

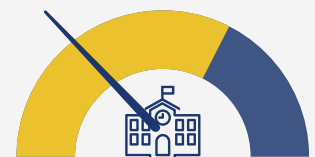
PARTICIPATION IN OPTIONAL SOGI MODULES

Approximately 5,000 students responded to demographic questions regarding their sexual orientation and gender identity. The complete methodology is described in the *KCTC 2022 Sexual Orientation and Gender Identity Pilot Methodology*.

Nearly two-thirds - 187 of 286 (65%) - of Kansas districts participated in the 2022-2023 KCTC Student Survey. Among participating districts, 50 of 187 (27%) elected to include optional SOGI demographic questions.

Approximately 20% of the total eligible 6th, 8th, 10th and 12th grade students in Kansas (n=30,467) participated in the KCTC 2023 survey. Approximately 3% of the total eligible Kansas students participated in optional SOGI modules for the 2023 KCTC survey.

DISTRICT PARTICIPATION



27%

of participating districts included SOGI questions



LIMITATIONS OF CURRENT DATA

Not all school districts administered the SOGI optional modules, and the convenience sampling method may limit the generalization of data to all students. Data in the 2023 SOGI Demographics Summary represents approximately 5,000 students who participated. SOGI language is continually changing. It is always a language limitation, and the LTI research team is continually monitoring the prevailing practices.

Data collected in the KCTC 2023 SOGI Demographics Summary shows patterns similar to the published research. KCTC SOGI demographic questions were originally modeled after Child Trends research and similar items asked on the Youth Risk Behavior Survey (YRBS) administered by the Centers for Disease Control (CDC) in 2021.

OVERVIEW

This summary report includes a descriptive illustration of how LGBT+ students responded to behavioral health and other questions compared to students who reported they are straight or cisgender, respectively. Data are presented only at the state level.



TRIGGER WARNING:

This report contains data about adolescent suicide, depression, bullying, and personal safety.

CONTACT OR FOLLOW US FOR MORE INFORMATION



620.724.6281



www.kctcdata.org



kctc@greenbush.org



[@KCTCStudentSurvey](https://www.facebook.com/KCTCStudentSurvey)

SOGI Demographics

Sexual Orientation

Which of the following best describes your sexual orientation?

- Straight
- Gay or lesbian
- Bisexual
- Questioning or not sure
- Other (optional write-in)
- I do not know what this question is asking

Gender Identity

What sex were you assigned at birth?

- Male
- Female

What is your current gender identity, even if it is different than the gender you were assigned at birth?

- Boy or Man
- Girl or Woman
- Nonbinary
- Questioning or not sure
- Other (optional write-in)

SOGI Terminology

Sexual Orientation

Straight or Heterosexual

A man who is primarily attracted to women or a woman who is primarily attracted to men

Gay or Lesbian

A person who is attracted primarily to members of the same gender

Bisexual

A person who is attracted to both people of their own gender and other genders

Questioning or not sure

A person who is in the process of exploring and discovering one's own sexual orientation, gender identity, or gender expression

Gender Identity

Cisgender

Individuals whose current gender identity is the same as the sex they were assigned at birth

Transgender

Individuals whose current gender identity differs from the sex they were assigned at birth

Nonbinary

Individuals who do not exclusively identify their gender as male or female

Questioning or not sure

A person who is in the process of exploring and discovering one's own sexual orientation, gender identity, or gender expression

Terms listed are referenced from the Centers for Disease Control's (CDC) Division of Adolescent and School Health Considerations for LGBTQ Youth. Definitions are cited by CDC from APA's [Definitions Related to Sexual Orientation and Gender Diversity](#) and the World Health Organization's glossary of terms and tools. Last reviewed: December 23, 2022.

[cdc.gov/healthyouth/terminology/sexual-and-gender-identity-terms.htm](https://www.cdc.gov/healthyouth/terminology/sexual-and-gender-identity-terms.htm).
Retrieved February 16, 2024

INFOGRAPHICS

The infographics in the following section highlight the most prevalent, high-risk, behaviors reported by 6th, 8th, 10th, and 12th grade students who responded on the SOGI demographic items on the 2023 Kansas Communities That Care Student Survey.

Infographics may be reproduced and shared by your organization in an effort to bring awareness.

Data reflect responses from students surveyed who responded to each question and reported sexual orientation and/or gender identity.

The combination of demographic groups displayed is due to the low number of participants in each group disaggregated and to aid in visualizations.

The acronym LGBT+ is used to represent students reporting gay or lesbian, bisexual, or questioning or not sure when asked about their sexual orientation; and individuals who report their gender identity as transgender, nonbinary, or questioning or not sure.

SOGI Demographics

Sexual Orientation & Gender Identity (SOGI) Demographics as reported by students surveyed KCTC 2023

Sexual Orientation

83%

STRAIGHT

2%

GAY OR
LESBIAN

7%

BISEXUAL

3%

QUESTIONING OR NOT SURE

3%

OTHER

Gender Identity

96%

CISGENDER

1%

TRANSGENDER

2%

NONBINARY

1%

QUESTIONING OR NOT SURE



www.kctcdata.org

Percentages are rounded and may not equal 100%. Of the students responding to sexual orientation questions, in addition to those reported on this page, 3.1% did not know what the question was asking and .5% did not provide a relevant response.



4x more
likely

Transgender + Nonbinary students surveyed in Kansas are more likely to report experiencing suicidal ideation & behaviors than cisgender students

**Seriously thought
about suicide**

**Made a plan
about suicide**

**Attempted
suicide**



www.kctcdata.org

**Nonbinary students
surveyed in Kansas were**

6x

**more likely
to attempt suicide**

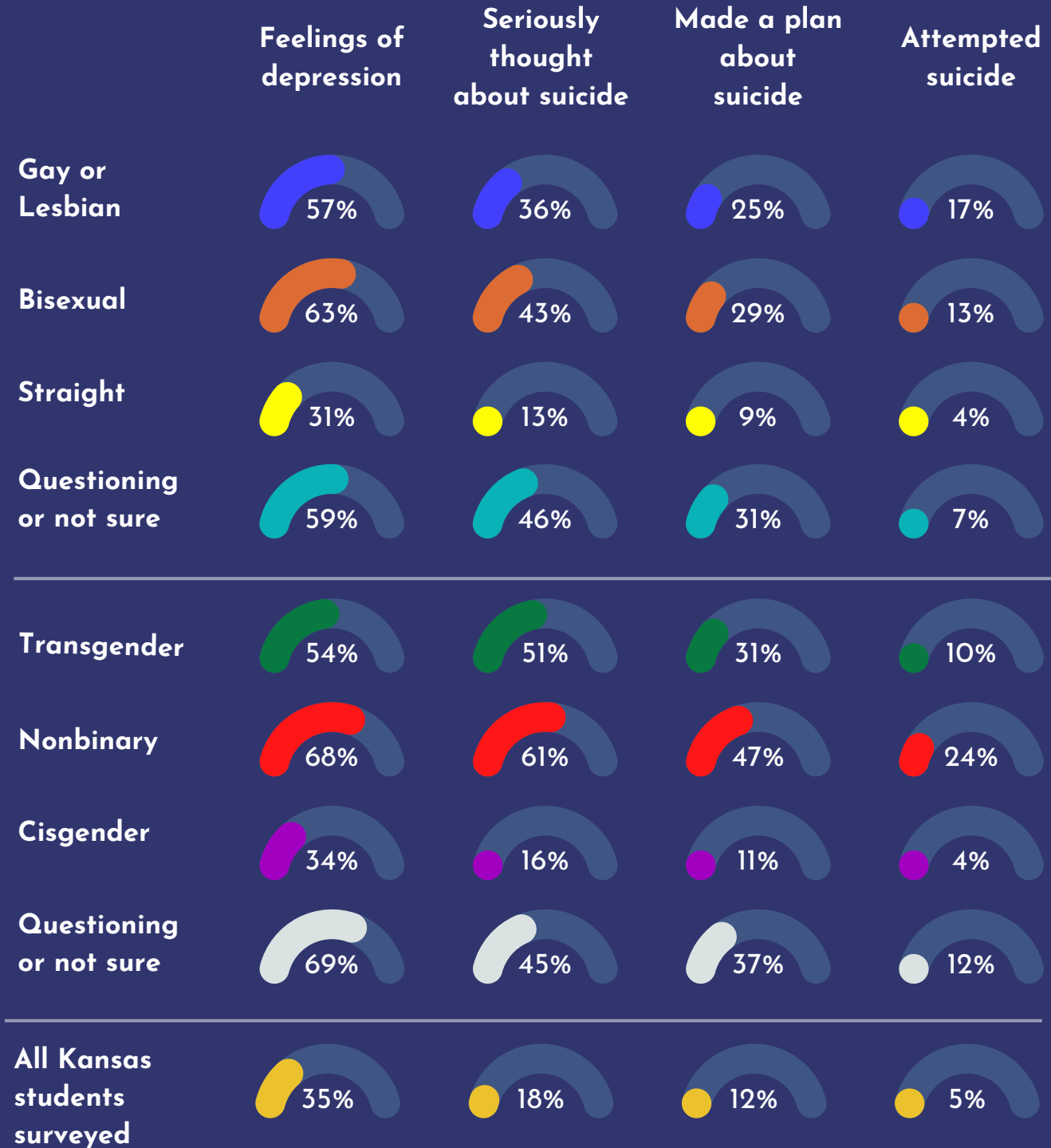
Nonbinary individuals do not exclusively identify their gender as male or female



www.kctcdata.org

LGBT+ students reported higher levels of depression, suicidal ideation & behaviors

Percentage of students surveyed reporting "yes" during the past 12 months



*LGBT+ = gay or lesbian, bisexual, transgender, nonbinary, and questioning or not sure.



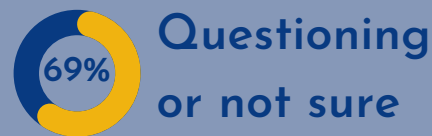
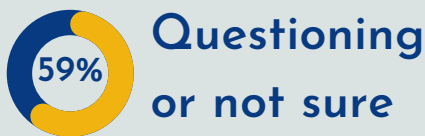
www.kctcdata.org

More than
HALF



50%

of LGBT+ students surveyed reported
EXPERIENCING FEELINGS OF DEPRESSION
during the past year



*LGBT+ = lesbian or gay, bisexual, transgender, nonbinary, and questioning or not sure.



LGBT+ students surveyed
are more likely to report
feeling unsafe

31%

LGB+
compared to 13% of straight kids

MISSED SCHOOL AT LEAST ONCE
BECAUSE THEY
FELT UNSAFE,
UNCOMFORTABLE OR NERVOUS
AT SCHOOL

35%

TRANSGENDER + NONBINARY
compared to 14% of cisgender kids

16%

LGB+
compared to 7% of straight kids

MISSED SCHOOL AT LEAST ONCE
BECAUSE THEY
FELT UNSAFE,
UNCOMFORTABLE OR NERVOUS
**ON THEIR WAY TO/
FROM SCHOOL**

19%

TRANSGENDER + NONBINARY
compared to 9% of cisgender kids

30%

LGB+
compared to 11% of straight kids

DON'T FEEL SAFE
AT SCHOOL

41%

TRANSGENDER + NONBINARY
compared to 13% of cisgender kids

*LGBT+ = lesbian or gay, bisexual, other, transgender, and nonbinary.

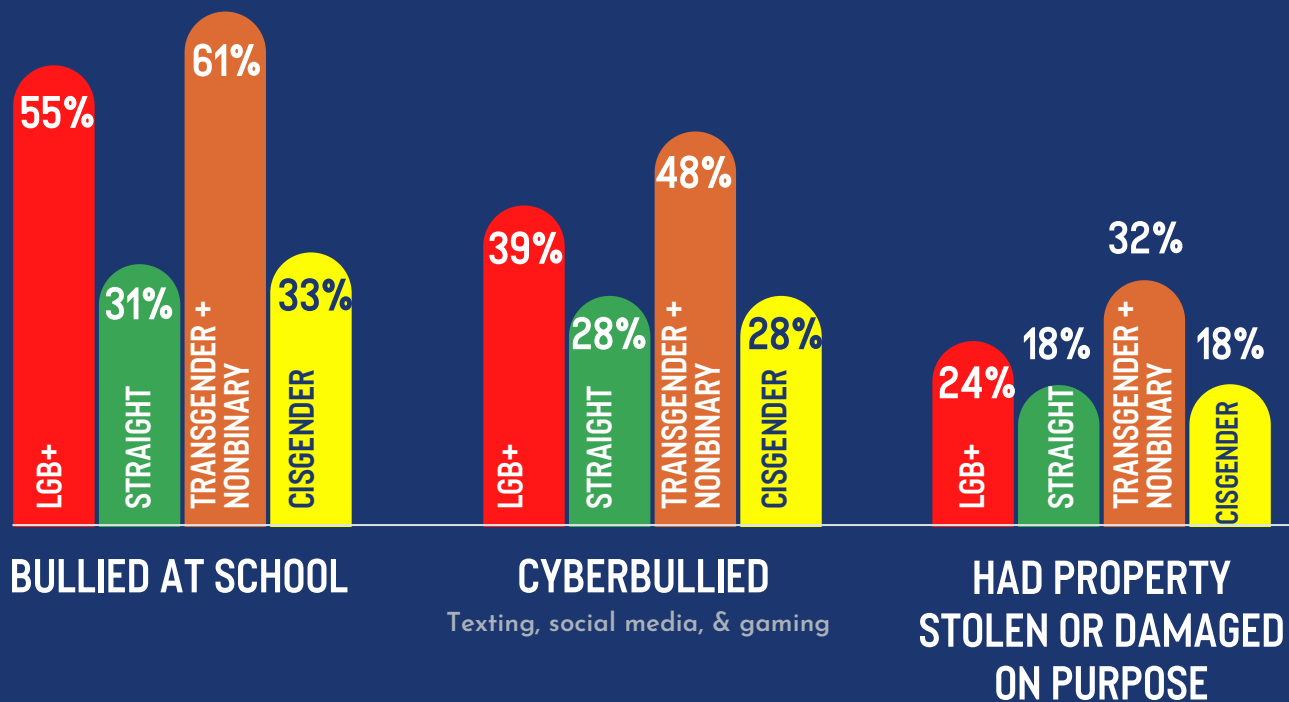
*LGB+ = lesbian or gay, bisexual, and other.



www.kctcdata.org



LGBT+ students surveyed experienced higher levels of bullying



*LGBT+ = lesbian or gay, bisexual, other, transgender, and nonbinary.

*LGB+ = lesbian or gay, bisexual, and other.



www.kctcdata.org

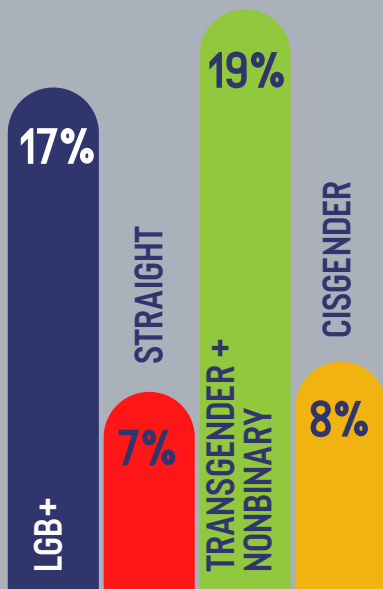
LGBT+ students surveyed reported experiencing

food insecurity

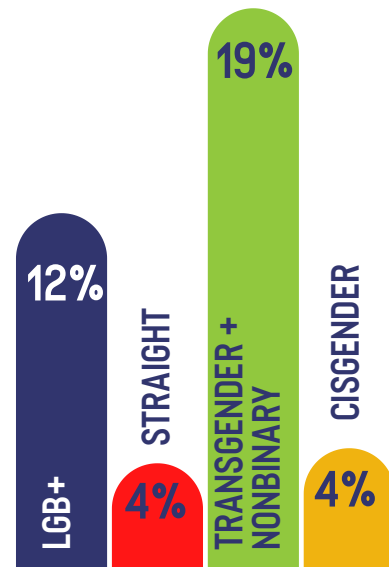
>> twice as much as straight or cisgender students

AT LEAST ONCE A MONTH

... worried that food at home would run out before their family got money to buy more



... skipped a meal because their family didn't have enough money for food



Comparison Data

The infographics in the following section highlight the most prevalent, high-risk, behaviors reported by 6th, 8th, 10th, and 12th grade students who responded on the SOGI demographic items on the 2023 Kansas Communities That Care Student Survey.

Data reflect responses from students surveyed who responded to each question and reported sexual orientation and gender identity. Data is displayed using the language presented on the survey.

The combination of demographic groups displayed is due to the low number of participants in each group disaggregated and to aid in visualizations.

The acronym LGBT+ is used to represent students reporting gay or lesbian, bisexual, or questioning or not sure when asked about their sexual orientation and individuals who report their gender identity is transgender, nonbinary, or questioning or not sure.

DEPRESSION, SUICIDAL IDEATION & BEHAVIORS DURING THE PAST YEAR

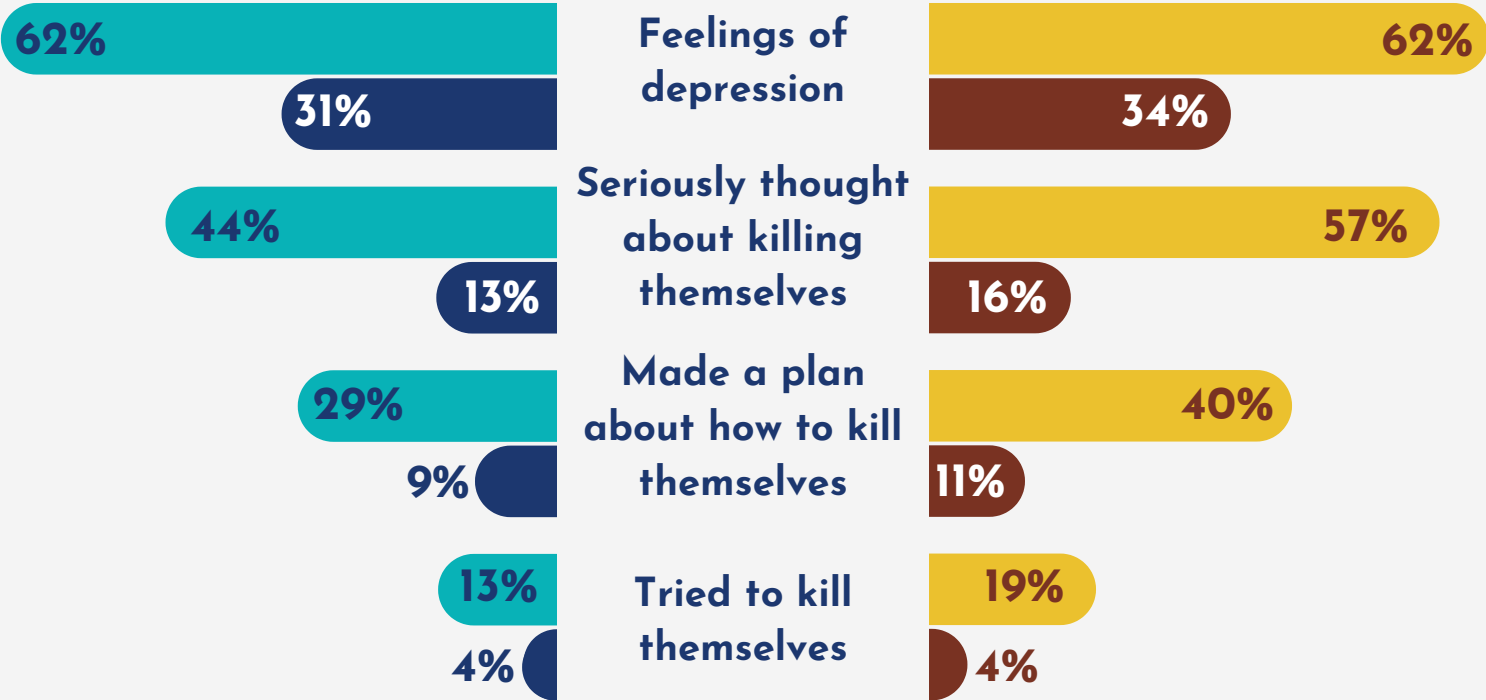
Percentage of students surveyed who reported feelings of depression or suicidal thoughts, plans, or attempts sorted by SOGI demographics

SEXUAL ORIENTATION

- LGB+
- STRAIGHT

GENDER IDENTITY

- TRANSGENDER + NONBINARY
- CISGENDER



Data is displayed using the language presented on the survey.

*LGB+ = lesbian or gay, bisexual, and other.

DEPRESSION, SUICIDAL IDEATION & BEHAVIORS

Percentage of students surveyed who reported feelings of depression or suicidal thoughts, plans, or attempts in the past year sorted by SOGI demographics

SEXUAL ORIENTATION

DEPRESSION, SUICIDAL IDEATION & BEHAVIORS	STRAIGHT	LGB+ *	LESBIAN OR GAY	BISEXUAL	QUESTIONING OR NOT SURE
FEELINGS OF DEPRESSION	30.6	61.8	56.7	62.5	58.8
SERIOUSLY THOUGHT ABOUT KILLING THEMSELVES	13.4	43.5	35.8	43.0	46.2
MADE A PLAN ABOUT HOW THEY WOULD KILL THEMSELVES	9.1	28.8	25.3	28.9	30.8
TRIED TO KILL THEMSELVES	3.7	13.2	16.8	12.8	6.9

*LGB+ = lesbian or gay, bisexual, and other.

GENDER IDENTITY

DEPRESSION, SUICIDAL IDEATION & BEHAVIORS	CISGENDER	TRANSGENDER + NONBINARY	TRANSGENDER	NONBINARY	QUESTIONING OR NOT SURE
FEELINGS OF DEPRESSION	33.5	62.2	54.2	67.6	69.2
SERIOUSLY THOUGHT ABOUT KILLING THEMSELVES	15.7	56.7	51.0	60.6	45.3
MADE A PLAN ABOUT HOW THEY WOULD KILL THEMSELVES	10.6	40.3	30.6	47.1	36.5
TRIED TO KILL THEMSELVES	4.2	18.5	10.2	24.3	12.0

Data tables display the language presented on the survey.

BULLYING AT LEAST ONCE A MONTH

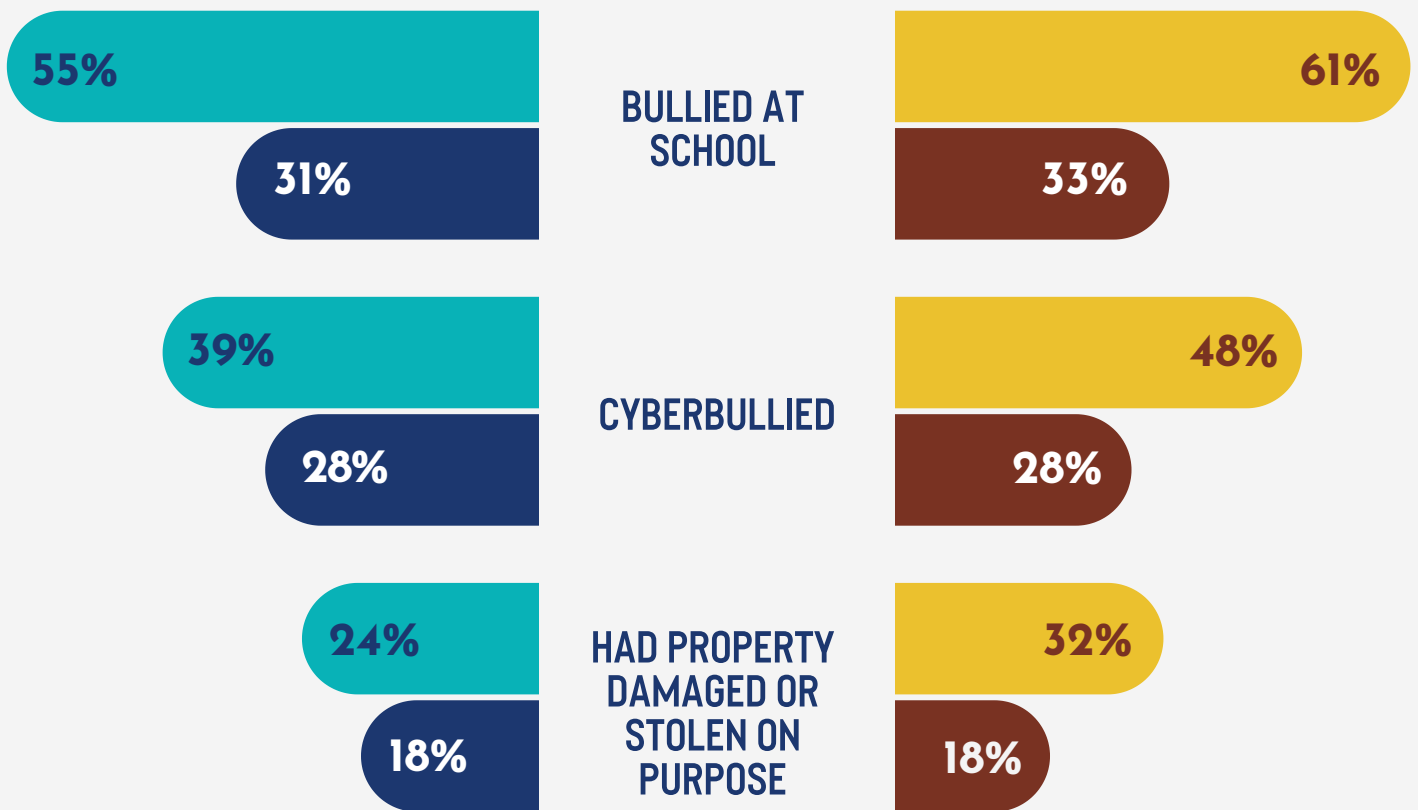
SEXUAL ORIENTATION



GENDER IDENTITY



Percentage of students surveyed who reported experiencing bullying at least once a month sorted by SOGI demographics



*LGB+ = lesbian or gay, bisexual, and other.

BULLYING

Percentage of students surveyed who reported experiencing bullying at least once a month sorted by SOGI demographics

SEXUAL ORIENTATION

BULLYING	STRAIGHT	LGB+ *	LESBIAN OR GAY	BISEXUAL	QUESTIONING OR NOT SURE
BULLIED AT SCHOOL	31.2	54.9	48.5	56.5	46.2
CYBERBULLIED THROUGH TEXT, SOCIAL MEDIA, OR GAMING	28.0	38.8	31.7	42.5	43.5
HAD PROPERTY STOLEN OR DAMAGED ON PURPOSE SUCH AS YOUR CAR, CLOTHING, OR BOOKS	18.3	24.4	18.6	25.1	30.5

*LGB+ = lesbian or gay, bisexual, and other.

GENDER IDENTITY

BULLYING	CISGENDER	TRANSGENDER + NONBINARY	TRANSGENDER	NONBINARY	QUESTIONING OR NOT SURE
BULLIED AT SCHOOL	32.6	61.3	46.0	71.6	59.6
CYBERBULLIED THROUGH TEXT, SOCIAL MEDIA, OR GAMING	28.1	48.4	42.0	52.7	37.7
HAD PROPERTY STOLEN OR DAMAGED ON PURPOSE SUCH AS YOUR CAR, CLOTHING, OR BOOKS	18.4	31.9	30.4	32.9	29.4

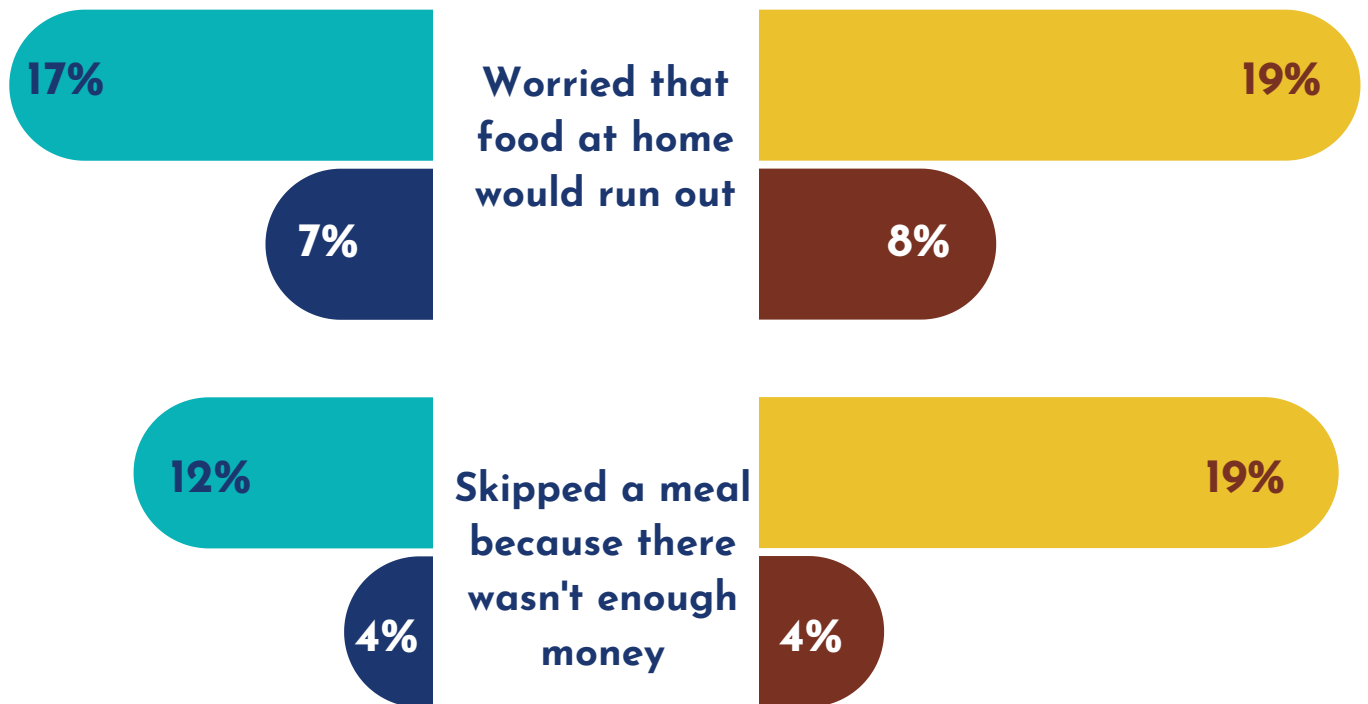
FOOD INSECURITY AT LEAST ONCE A MONTH

Percentage of students surveyed who reported food insecurity at least once a month sorted by SOGI demographics

SEXUAL ORIENTATION



GENDER IDENTITY



*LGB+ = lesbian or gay, bisexual, and other.

FOOD INSECURITY

Percentage of students surveyed who reported food insecurity at least once a month sorted by SOGI demographics

SEXUAL ORIENTATION

FOOD INSECURITY	STRAIGHT	LGB+ *	LESBIAN OR GAY	BISEXUAL	QUESTIONING OR NOT SURE
WORRIED AT LEAST ONCE A MONTH THAT FOOD AT HOME WOULD RUN OUT BEFORE FAMILY GOT MONEY TO BUY MORE	6.6	16.7	12.9	17.5	17.3
SKIPPED A MEAL AT LEAST ONCE A MONTH BECAUSE FAMILY DIDN'T HAVE ENOUGH MONEY TO BUY FOOD	3.5	11.8	10.2	12.8	11.8

*LGB+ = lesbian or gay, bisexual, and other.

GENDER IDENTITY

FOOD INSECURITY	CISGENDER	TRANSGENDER + NONBINARY	TRANSGENDER	NONBINARY	QUESTIONING OR NOT SURE
WORRIED AT LEAST ONCE A MONTH THAT FOOD AT HOME WOULD RUN OUT BEFORE FAMILY GOT MONEY TO BUY MORE	7.6	19.3	14.9	22.4	26.4
SKIPPED A MEAL AT LEAST ONCE A MONTH BECAUSE FAMILY DIDN'T HAVE ENOUGH MONEY TO BUY FOOD	4.0	18.6	15.2	20.9	17.0

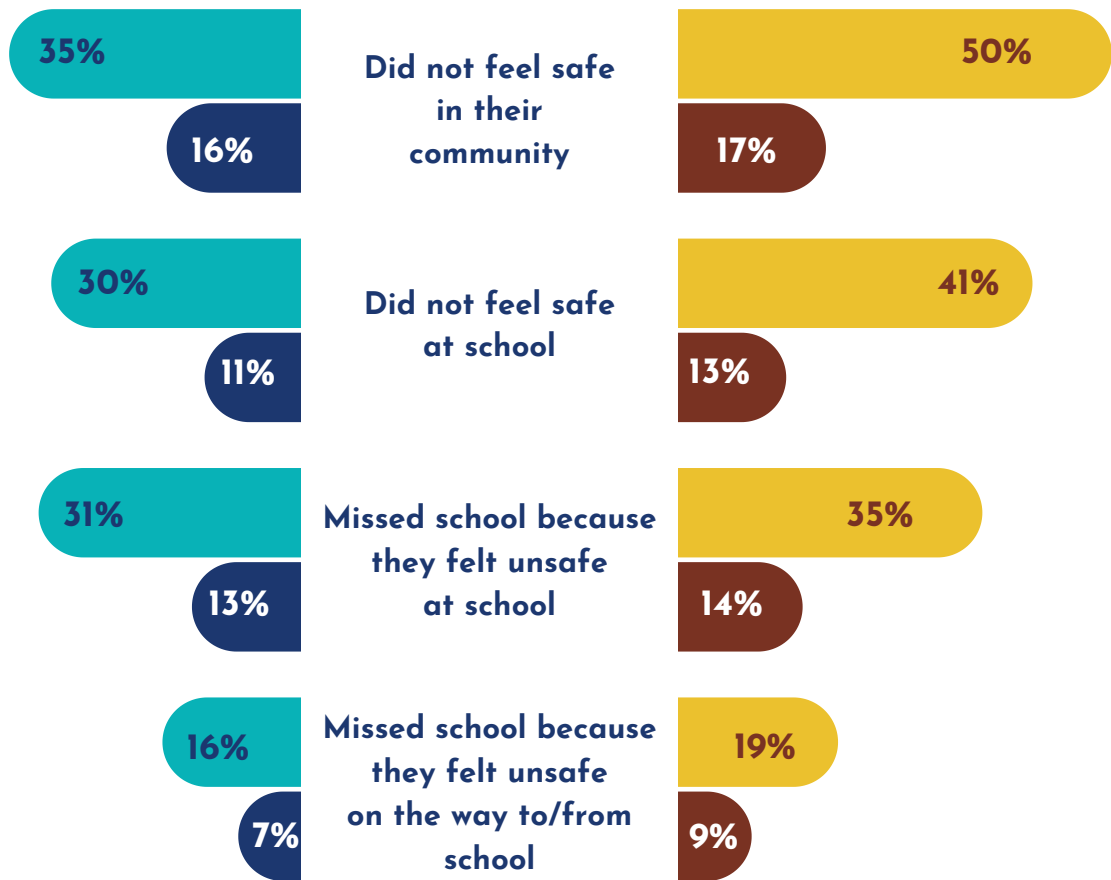
SAFETY

Percentage of students surveyed who reported they do not feel safe sorted by SOGI demographic groups

SEXUAL ORIENTATION



GENDER IDENTITY



*LGB+ = lesbian or gay, bisexual, and other.

SAFETY

Percentage of students surveyed who reported they do not feel safe sorted by SOGI demographic groups

SEXUAL ORIENTATION

SAFETY	STRAIGHT	LGB+ *	LESBIAN OR GAY	BISEXUAL	QUESTIONING OR NOT SURE
DID NOT FEEL SAFE IN THEIR COMMUNITY	15.9	34.6	36.6	32.5	32.3
DID NOT FEEL SAFE AT SCHOOL	11.4	29.6	27.0	30.0	23.1
MISSED SCHOOL BECAUSE THEY FELT UNSAFE, UNCOMFORTABLE, OR NERVOUS AT SCHOOL	12.9	31.1	21.4	35.3	29.8
MISSED SCHOOL BECAUSE THEY FELT UNSAFE, UNCOMFORTABLE OR NERVOUS ON THEIR WAY TO/FROM SCHOOL	7.4	16.4	16.5	17.2	17.8

*LGB+ = lesbian or gay, bisexual, and other.

GENDER IDENTITY

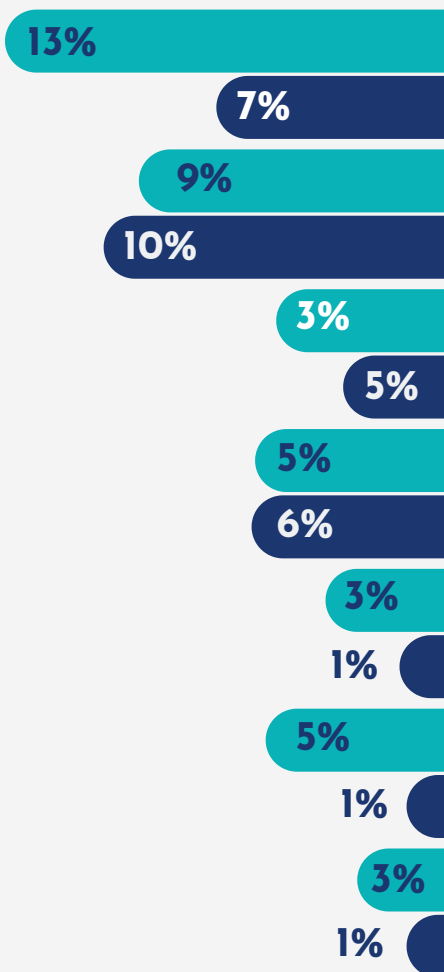
SAFETY	CISGENDER	TRANSGENDER + NONBINARY	TRANSGENDER	NONBINARY	QUESTIONING OR NOT SURE
DID NOT FEEL SAFE IN THEIR COMMUNITY	17.1	50.0	42.2	55.2	43.1
DID NOT FEEL SAFE AT SCHOOL	12.5	40.0	26.6	50.6	34.6
MISSED SCHOOL BECAUSE THEY FELT UNSAFE, UNCOMFORTABLE, OR NERVOUS AT SCHOOL	14.4	35.2	22.4	43.8	42.3
MISSED SCHOOL BECAUSE THEY FELT UNSAFE, UNCOMFORTABLE OR NERVOUS ON THEIR WAY TO/FROM SCHOOL	8.5	18.5	16.0	20.3	28.8

SUBSTANCE USE DURING THE PAST 30 DAYS

Percentage of students surveyed who reported using substances at least once during the past 30 days sorted by SOGI demographic groups

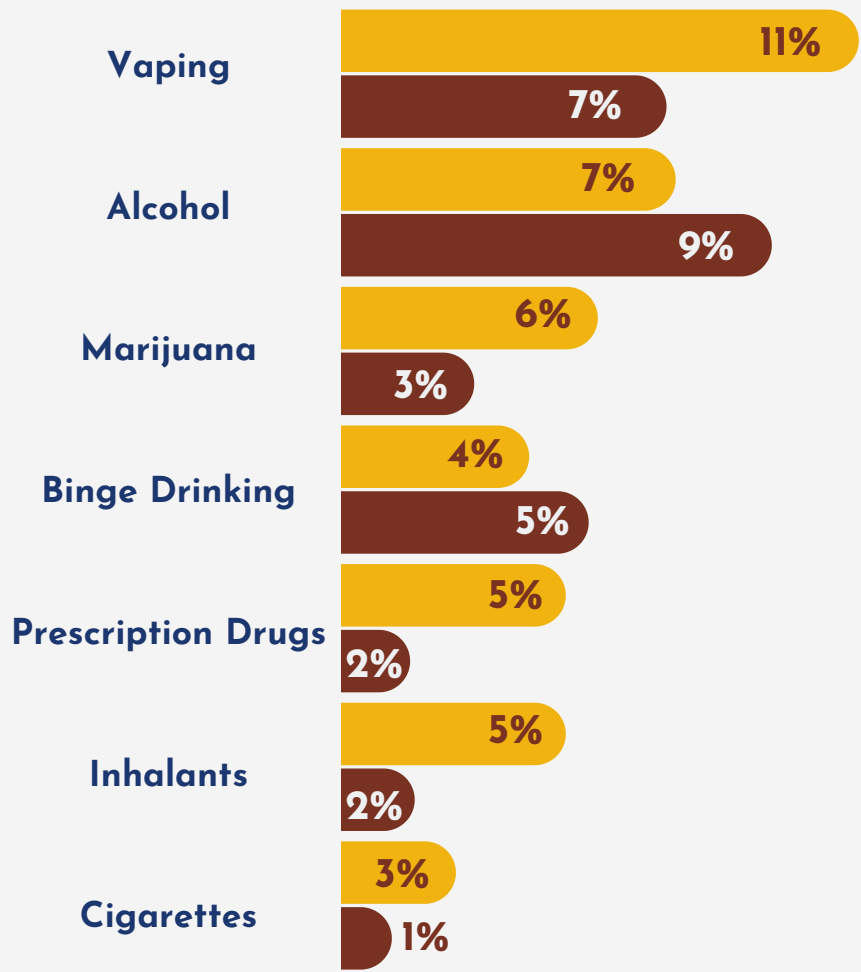
SEXUAL ORIENTATION

LGB+
STRAIGHT



GENDER IDENTITY

TRANSGENDER + NONBINARY
CISGENDER



*LGB+ = lesbian or gay, bisexual, and other.

SUBSTANCE USE

Percentage of students surveyed who reported using substances at least once during the past 30 days sorted by SOGI demographic groups

SEXUAL ORIENTATION

SUBSTANCE USE	STRAIGHT	LGB+ *	LESBIAN OR GAY	BISEXUAL	QUESTIONING OR NOT SURE
VAPING	6.5	12.5	5.8	17.2	11.5
ALCOHOL	9.7	8.7	6.9	10.7	11.4
MARIJUANA	2.9	4.8	1.0	6.5	4.6
BINGE DRINKING	5.5	5.4	3.8	7.0	5.7
PRESCRIPTION DRUG MISUSE	1.3	3.4	3.0	4.0	3.8
INHALANTS	1.1	5.1	4.9	5.3	7.6
CIGARETTES	1.1	2.5	1.9	3.3	2.3

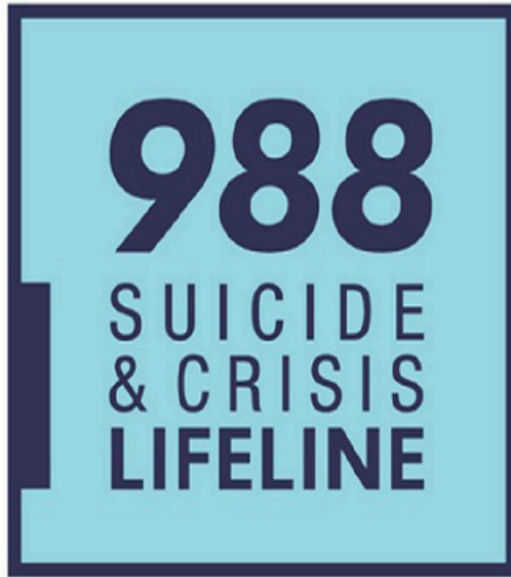
*LGB+ = lesbian or gay, bisexual, and other.

GENDER IDENTITY

DEPRESSION, SUICIDAL IDEATION & BEHAVIORS	CISGENDER	TRANSGENDER + NONBINARY	TRANSGENDER	NONBINARY	QUESTIONING OR NOT SURE
VAPING	7.1	11.3	4.0	16.2	5.6
ALCOHOL	9.4	7.3	4.0	9.5	7.5
MARIJUANA	2.9	5.6	2.0	8.1	1.9
BINGE DRINKING	5.4	4.1	2.4	5.4	2.6
PRESCRIPTION DRUG MISUSE	1.5	4.9	4.2	5.4	7.8
INHALANTS	1.6	4.9	2.0	6.8	5.6
CIGARETTES	1.1	2.5	0.0	4.1	1.9

DATA REFLECT RESPONSES FROM STUDENTS SURVEYED IN 2023 WHO RESPONDED TO EACH QUESTION AND REPORTED SEXUAL ORIENTATION AND GENDER IDENTITY.

WHERE CAN I FIND HELP?



If you or someone you know
needs support now,
CALL OR TEXT: 988
CHAT: 988lifeline.org

Talk with us.



Like other oppressed communities, LGBTQ+ communities are disproportionately at risk for suicide and other mental health struggles due to historic and ongoing structural violence. The 988 Suicide & Crisis Lifeline has information and resources for those looking for help, and support for you or loved ones who identify within the vast, diverse, and thriving LGBTQ+ communities.



Students deserve a welcoming, loving world. And so do the people you care about. Visit the [trevorproject.org](https://www.trevorproject.org) to reach out to a counselor if you're struggling, find answers and information, and get the tools you need to help someone else.

[thetrevorproject.org](https://www.trevorproject.org)

WHAT ELSE CAN YOU DO TO HELP?

Where do you go from here?

Student data helps us understand past thoughts, feelings, and behaviors. It also helps us look forward to find proactive ways to support kids.

If you are interested in additional information regarding available resources, tools, and best practices for addressing ways to cultivate a safe and supportive environment for all students, regardless of sexual orientation, gender identity or expression (SOGI), or are interested in receiving training or technical assistance, please consult the following resources.



For training opportunities for your school to enhance culturally responsive care for LGBTQ+ students, contact Rebekah Helget with Greenbush Specialized Learning Services (SLS) at 620-724-6281 or visit greenbush.org.



Visit glsen.org for resources and professional learning opportunities around the topic of safe and supportive schools for all youth, regardless of sexual orientation and gender identity and expression. Locate everything from lesson plans to leadership opportunities with your GLSEN chapter.



If you are a parent looking for support, a young person looking to connect, a professional interested in learning best practices, a faith leader seeking resources, or anyone who wants the most up-to-date and accurate information about gender and youth, Gender Spectrum can help. Visit genderspectrum.org.



Mental Health and Advocacy

Looking for a [Mental Health and Advocacy Resource for LGBTQ Youth](#)? Check out this 3-minute read from GLSEN at glsen.org/activity/mental-health-advocacy.

Are you looking for additional information about providing safe and supportive environments for all students inclusive of LGBTQ+ experiences? Check out the resources below recommended by the National Association of School Psychologists and GLSEN Kansas.



Click to view these recommended resources for educators:

- [Respect for All Policy Resource](#)
- [Safe Space Kit](#)



Visit the National SOGIE center at sogiecenter.org to locate resources on providing culturally responsive care and learn more about promoting the wellbeing of LGBTQ+ youth.



Allies for All. For research-based strategies supporting LGBTQ+ youth, consider literature from the National Association of School Psychologists and their "Allies for All" resources at nasponline.org.



- Centers for Disease Control of Adolescent and School Health. (2019). [Terminology | Adolescent and School Health | CDC](#). Accessed 16 February 2024.
- Chaney, L., Pelkey, L.M., Sultana, F., & Williams, A. (April 2022). Kansas Communities That Care (KCTC) Student Survey: Sexual Orientation and Gender Identity (SOGI) Item Selection. *Learning Tree Institute*.
- Greenbush. (2023). *Kansas Communities That Care (KCTC) Student Survey* [Data set]. Kansas Department for Aging and Disability Services. kctcdata.org.
- LTI at Greenbush. (2022). KCTC 2022 Sexual Orientation and Gender Identity Pilot Methodology. kctcdata.org/file/sogi-methodology-kctc-student-survey-2022.
- Temkin, D., Belford, J., McDaniel, T., Stratford, B., & Parris, D. (2017). Improving measurement of sexual orientation and gender identity among middle and high school students. *Child Trends*, 22, 1-64.